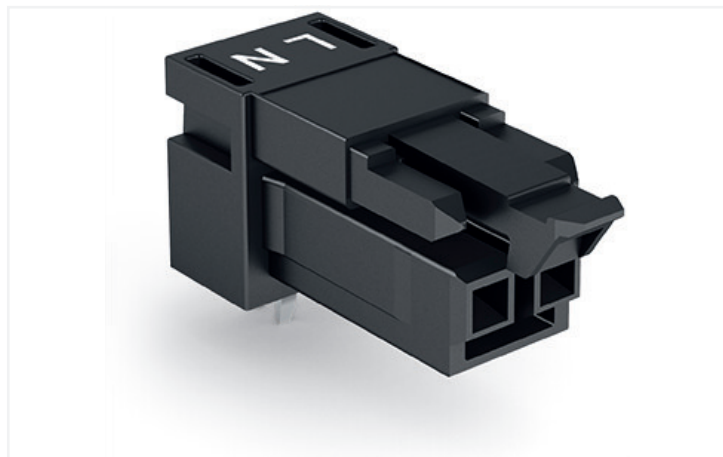


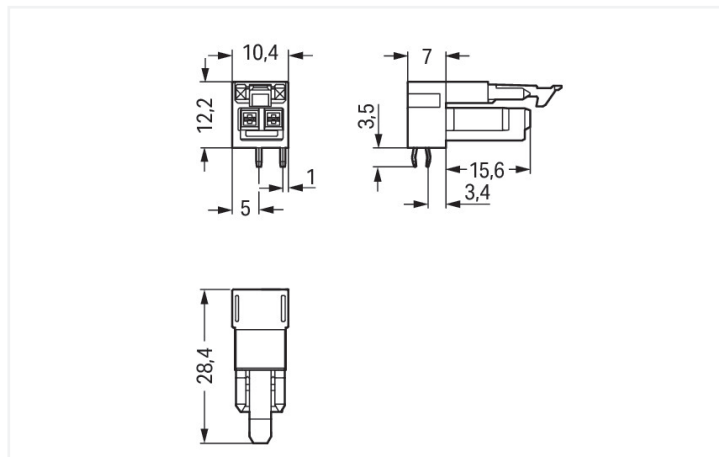
Data Sheet | Item Number: 890-802/011-000

Socket for PCBs; angled; 2-pole; Cod. A; black

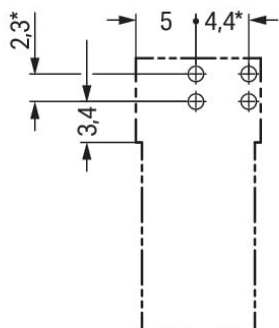
<https://www.wago.com/890-802/011-000>



Color: ■ black



Dimensions in mm



* ± 0.05 mm

Drilled hole diameter: $1.3^{+0.1}$ mm

Dimensions in mm

Female connector/socket *WINSTA*® MINI with protection against mismatching

The *WINSTA*® MINI female connector/socket A coding are compact but powerful PCB terminal blocks. They offer easy operation and the greatest flexibility for installation. Our pluggable PCB connectors provide a versatile pluggable connection system for your devices that meets all the requirements for a robust device connection that is easy to put into operation. The mechanical coding and color coding of the pcb connectors ensure error-free installation of the individual components – including protection against mismatching. The *WINSTA*® MINI pcb connectors with A coding in black or white is usually used for general mains applications in power distribution. *WINSTA*® MINI is our response to the trend toward miniaturisation. Our smallest pluggable connection system is especially suitable for lights, for instance, since as a result of LED technology; due to complex systems, these offer significantly less space for the connection technology.

WINSTA® MINI solutions for your electrical installation – protected against mismatching and maintenance-free

The *WINSTA*® Pluggable Connection System is perfectly tailored to the very strict requirements of building installation. It makes electrical installation pluggable, and consequently more efficient, even more reliable, and error-free. Using this pre-assembled system decreases assembly times and errors during installation at the construction site. Now you can also cut installation costs without compromising safety and quality: with locking lever reduces the need for servicing and prevents unnecessary downtime.

- pcb connectors with protection against mismatching
- compact design for conductors with a cross-section up to 1.5 mm²
- for any mains application
- quick replacement of defective units during ongoing operation



Electrical data				
Ratings per		IEC/EN 60664-1		
Overvoltage category	III	III	II	
Pollution degree	3	2	2	
Nominal voltage	250 V	-	-	
Rated surge voltage	4 kV	-	-	
Rated current	16 A	-	-	
Approvals per				
Rated voltage		600 V		
Rated current		14 A		
General information				
Note on contact resistance		approx. 1 mΩ of contact resistance approx. 0.25 mΩ contact transition plug/ socket		
Connection data				
Total number of potentials		2		
Number of levels		1		
Connection 1				
Pole number		2		
Physical data				
Pin spacing		4.4 mm / 0.173 inches		
Width		10.4 mm / 0.41 inches		
Height		15.7 mm / 0.618 inches		
Height from the surface		12.2 mm / 0.48 inches		
Depth		28.4 mm / 1.118 inches		
Solder pin length		3.5 mm		
Solder pin dimensions		1 x 0.8 mm		
Drilled hole diameter with tolerance		1.3 ^(+0.1) mm		
Mechanical data				
Application		General mains applications		
Coding		A		
Variable coding		No		
Marking		L N		
Potential marking		L N		
Mating force of a plug-in connection		approx. 20 ... 70 N (depending on pole number)		
Retention force of a plug-in connection		Locked: > 80 N		
Unmating force of a plug-in connection		Unlocked: approx. 20 ... 70 N (depending on pole number)		
Number of mating cycles		200, without resistive load		
Design		angled		
Plug-in connection				
Contact type (pluggable connector)		Female connector/socket		
Connector (connection type)		for PCB		
Mismating protection		Yes		
Note on mismating protection		All WINSTA® components are 100% protected against mismating when: a.) plugging different numbers of poles b.) plugging while rotated 180 c.) plugging while laterally staggered d.) plugging one pole		
Mating direction to the PCB		0 °		
Locking lever		Yes		
Locking of plug-in connection		Locking lever		



Plug-in connection		
Note on locking system		All connectors for mounted installations (snap-in versions for lighting fixtures or devices, all types of PCB and distribution connectors) are factory-equipped with locking levers to ensure plugs and sockets are securely locked. Additional locking levers are only required for flying leads (plug/socket).
PCB contact		
PCB contact		THT
Solder pin arrangement		2 in-line solder pins/pole
Number of solder pins per potential		2
Material data		
Note (material data)		Information on material specifications can be found here
Color		black
Cover color		gray
Material group		I
Insulation material		Polyamide (PA66)
Flammability class per UL94		V0
Clamping spring material		Chrome-nickel spring steel (CrNi)
Contact material		Copper or copper alloy; surface-treated
Contact plating		Tin
Fire load		0.054 MJ
Weight		2.5 g
Environmental requirements		
Processing temperature		-5 ... +40 °C
Continuous operating temperature		-35 ... +85 °C
Note on continuous operating temperature		Insulating parts for temperatures ≤ 105 °C
Commercial data		
eCl@ss 10.0		27-44-06-05
eCl@ss 9.0		27-44-06-05
ETIM 8.0		EC002560
ETIM 7.0		EC002560
PU (SPU)		100 pcs
Packaging type		Box
Country of origin		PL
GTIN		4050821695646
Customs tariff number		85366990990
Environmental Product Compliance		
RoHS Compliance Status		Compliant, No Exemption



Approvals / Certificates

General approvals



Approval	Standard	Certificate Name
CCA DEKRA Certification B.V.	EN 61535	71-123231
CCA DEKRA Certification B.V.	IEC 61535	NL-85020
cURus Underwriters Laboratories Inc.	UL 1977	E45171

Declarations of conformity and manufacturer's declarations

Approval	Standard	Certificate Name
EU-Declaration of Confor- mity WAGO GmbH & Co. KG	-	-
UK-Declaration of Confor- mity WAGO GmbH & Co. KG	-	-

Approvals for marine applications



Approval	Standard	Certificate Name
ABS American Bureau of Ship- ping	Steel Vessel Rules	19-HG1869855-PDA
DNV GL Det Norske Veritas, Ger- manischer Lloyd	-	TAE00001Z6
LR Lloyds Register	EN 61535	08/20047 (E2)

Downloads

Environmental Product Compliance

Compliance Search

Environmental Product Compliance 890-802/011-000	
--	--

CAD/CAE-Data

CAD data

2D/3D Models 890-802/011-000	
---------------------------------	--

CAE data

ZUKEN Portal 890-802/011-000	
---------------------------------	--

PCB Design

Symbol and Footprint via SamacSys 890-802/011-000	
Symbol and Footprint via Ultra Librarian 890-802/011-000	

Subject to changes. Please also observe the further product documentation!

Current addresses can be found at: www.wago.com