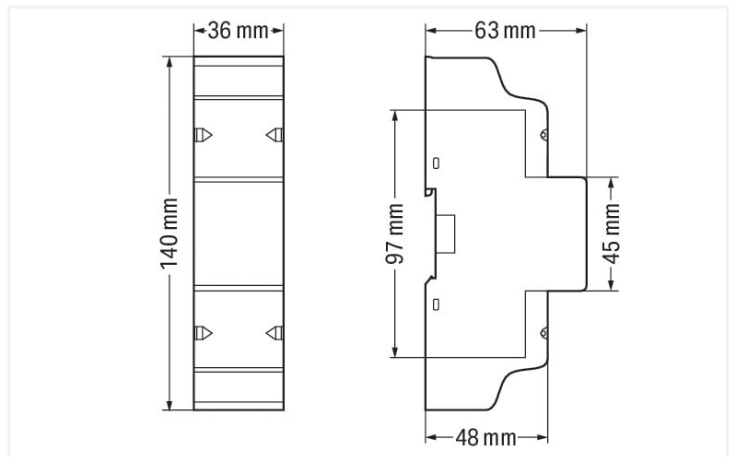
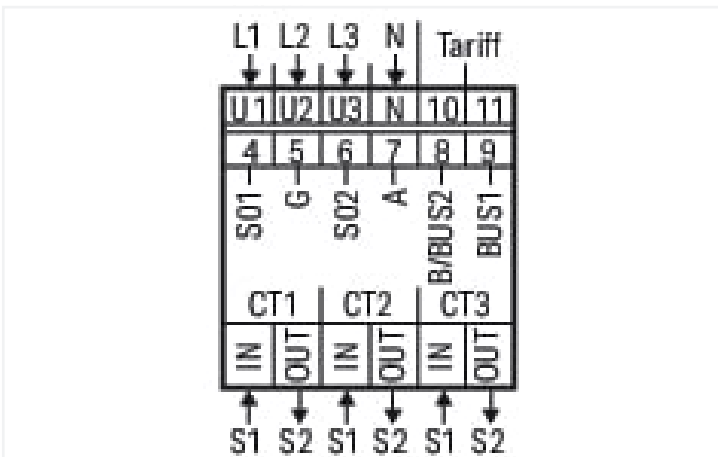
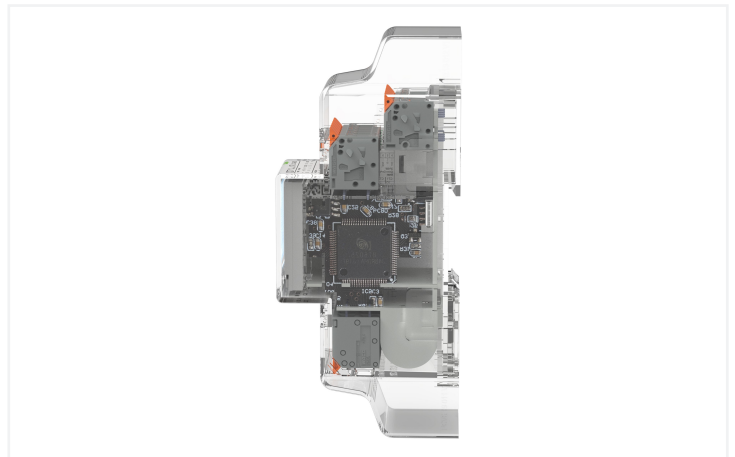
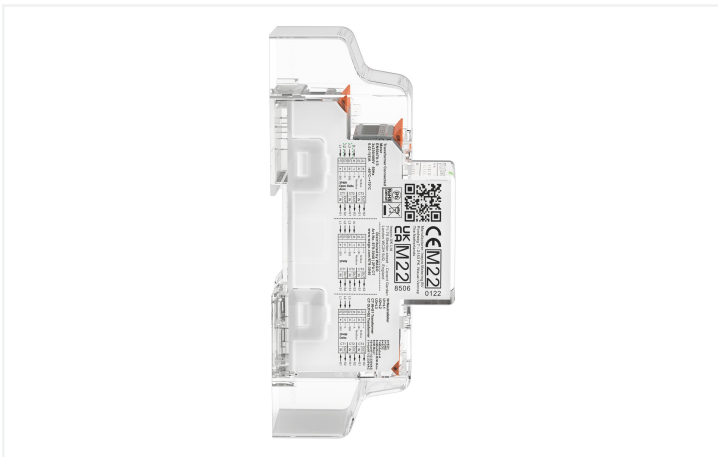


Data Sheet | Item Number: 879-3040

Energy meter (MID24); for transformer connection; 1 A / 5 A; 3x230/400V; 50Hz; Modbus® and M-Bus; 2 x S0 interface; 2PU CT

<https://www.wago.com/879-3040>



Short description:

Crucial for trimming costs, comprehensive energy measurement is necessary to optimize energy consumption. WAGO's portfolio now has new energy meters that simplify this task while offering several key advantages. They use push-in connection technology with a lever, making them connect quickly and easily. Versions for current transformers are even slimmer at only 35 mm. These slim profiles save a tremendous amount of control cabinet space. In addition to the values for active and reactive energy, the energy meters also record the mains frequency, as well as current, voltage and power for all phases. And the user can conveniently scan all of these energy characteristics at a glance on a large, illuminated display.

Features:

- Push-in CAGE CLAMP® and lever save time at every stage
- Real space savings: 35 mm wide (2PUCT)
- Measurement of supply and purchase
- Energy measurement in four tariffs
- The communications pro: M-Bus/Modbus® interface and two S0 pulse outputs
- Full transparency at a glance: display energy quality characteristics on an illuminated full-format display
- Intuitive configuration: touch-sensitive controls and configuration app via *Bluetooth*®

Technical data**Configuration**

Configuration options	Touch-sensitive controls Configuration app via <i>Bluetooth</i> ®
-----------------------	--

Input

Input signal type	Voltage Current
Network configuration	Two-wire, three-wire and four-wire networks
Reference current I_{ref}	1 A
Current transformer (secondary)	1 A 5 A
Current transformer ratio	1:1 ... 9999 : 1 / 5:5 ... 9995 : 5
Measured variable	Voltage Current Electrical output Mains frequency
Nominal input voltage U_{Inom}	3 x AC 230 ... 400 V
Input voltage range	±20 %
Input current I_i	≤ 5 A
Frequency range	45 ... 60 Hz

Communication

Communications	Modbus® M-Bus <i>Bluetooth</i> ®
Interface	RS-485 (2-wire); 2x S0 interfaces (configurable)
Indicators	LCD with backlight
Rate control input	230 VAC

Signal processing

Measured variables (calculated)	Active and reactive energy in supply and reference direction
Measurement type (load profile)	No
Measured value acquisition	for transformer connection;

Measurement error

Accuracy class	Class B (= 1 % error); Active energy per EN 50470-3
Calibration validity period	8 years

Power supply

Power supply type	Via measurement circuit
Power consumption P_{max} (phase; active power)	2 W
Power consumption P_{max} (phase; apparent power)	10 VA

Safety and protection

Dielectric strength	4 kV; 1 min
Impulse withstand voltage (1.2/50 µs)	6 kV
Pollution degree	2
Protection class	II
Protection type	IP51 / IP20; IP51 (front side); IP20 (connection)

Connection data

Connection position	Output on the bottom (PU)
Design	2PU CT

Connection 1

Connection type 1	Voltage/current
Connection technology	Push-in CAGE CLAMP®
WAGO connector	WAGO 2604 Series
Actuation type	Lever
Strip length	9 ... 11 mm / 0.35 ... 0.43 inches
Solid conductor	0.2 ... 4 mm ² / 24 ... 12 AWG
Fine-stranded conductor	0.2 ... 4 mm ² / 24 ... 12 AWG
Fine-stranded conductor; with insulated ferrule	0.25 ... 2.5 mm ²
Fine-stranded conductor; with uninsulated ferrule	0.25 ... 2.5 mm ²

Connection 2

Connection type 2	Communication/rate control input
Connection technology 2	Push-in CAGE CLAMP®
WAGO connector 2	WAGO 2604 Series
Actuation type 2	Lever
Strip length 2	9 ... 11 mm / 0.35 ... 0.43 inches
Solid conductor 2	0.2 ... 4 mm ² / 24 ... 12 AWG
Fine-stranded conductor 2	0.2 ... 4 mm ² / 24 ... 12 AWG
Fine-stranded conductor; with insulated ferrule 2	0.25 ... 2.5 mm ²
Fine-stranded conductor; with uninsulated ferrule 2	0.25 ... 2.5 mm ²

Physical data

Width	36 mm / 1.417 inches
Height	97 mm / 3.82 inches
Depth	63 mm / 2.48 inches
Note (dimensions)	Height with cover: 140 mm

Mechanical data

Mounting type	DIN-35 rail
Housing design	DIN-rail-mount enclosure

Material data

Housing material	PC 940A
Fire load	0 MJ
Weight	165 g

Environmental requirements

Ambient temperature (operation)	-40 ... +70 °C
Relative humidity	≤ 75% (during storage ≤ 95 %)

Standards and specifications

Conformity marking	CE
Standards/specifications	EN 50470-1/3
Accounting guideline	MID

Commercial data

ETIM 8.0	EC001102
ETIM 7.0	EC001102
PU (SPU)	1 pcs
Packaging type	Box
Country of origin	CN
Customs tariff number	90283019000

Environmental Product Compliance

RoHS Compliance Status	Compliant, No Exemption
------------------------	-------------------------

Downloads

Environmental Product Compliance

Compliance Search	
Environmental Product Compliance 879-3040	↓

Documentation

Manual			
Product Manual WAGO Energy Meters (MID)	V 1.6 26.09.2022	pdf 3668.98 KB	↓

Bid Text			
879-3040		xml 6.84 KB	↓
879-3040		docx 29.50 KB	↓
ausschreiben.de 879-3040			↓

Instruction Leaflet			
Energy consumption meter	V 1.15 16.02.2022	pdf 934.38 KB	↓

Application Notes

Application Note e!COCKPIT			
e!COCKPIT Application Note WagoAppPower-Measurement	2021-11-08 06.12.2021	pdf 930.71 KB	↓

CAD/CAE-Data

CAD data	
2D/3D Models 879-3040	↓

CAE data	
EPLAN Data Portal 879-3040	↓
ZUKEN Portal 879-3040	↓

Libraries

e!COCKPIT libraries			
e!COCKPIT Library Description WagoAppPowerMeasurement	1.7.4.9 29.09.2023	pdf 1643.75 KB	↓

1 Compatible Products

1.1 Optional Accessories

1.1.1 Communication

1.1.1.1 Communication module



[Item No.: 879-9000](#)
Communication module; Modbus TCP

1.1.2 Current transformer

1.1.2.1 Plug-in current transformer



[Item No.: 855-305/300-509](#)
Plug-in current transformer; Primary rated current 300 A; Secondary rated current: 5 A; Rated power: 5 VA; Accuracy class: 0.5; for billing purposes



[Item No.: 855-405/300-509](#)
Plug-in current transformer; Primary rated current 300 A; Secondary rated current: 5 A; Rated power: 5 VA; Accuracy class: 0.5; for billing purposes



[Item No.: 855-305/750-509](#)
Plug-in current transformer; Primary rated current 750 A; Secondary rated current: 5 A; Rated power: 5 VA; Accuracy class: 0.5; for billing purposes



[Item No.: 855-405/750-509](#)
Plug-in current transformer; Primary rated current 750 A; Secondary rated current: 5 A; Rated power: 5 VA; Accuracy class: 0.5; for billing purposes



[Item No.: 855-305/100-209](#)
Plug-in current transformer; Primary rated current: 100 A; Secondary rated current: 5 A; Rated power: 2.5 VA; Accuracy class: 0.5; for billing purposes



[Item No.: 855-305/150-209](#)
Plug-in current transformer; Primary rated current: 150 A; Secondary rated current: 5 A; Rated power: 2.5 VA; Accuracy class: 0.5; for billing purposes



[Item No.: 855-405/200-209](#)
Plug-in current transformer; Primary rated current: 200 A; Secondary rated current: 5 A; Rated power: 2.5 VA; Accuracy class: 0.5; for billing purposes



[Item No.: 855-305/200-509](#)
Plug-in current transformer; Primary rated current: 200 A; Secondary rated current: 5 A; Rated power: 5 VA; Accuracy class: 0.5; for billing purposes

1.1.2.1 Plug-in current transformer



Item No.: 855-405/250-209

Plug-in current transformer; Primary rated current: 250 A; Secondary rated current: 5 A; Rated power: 2.5 VA; Accuracy class: 0.5; for billing purposes

Item No.: 855-305/250-509

Plug-in current transformer; Primary rated current: 250 A; Secondary rated current: 5 A; Rated power: 5 VA; Accuracy class: 0.5; for billing purposes

Item No.: 855-305/400-509

Plug-in current transformer; Primary rated current: 400 A; Secondary rated current: 5 A; Rated power: 5 VA; Accuracy class: 0.5; for billing purposes

Item No.: 855-405/400-509

Plug-in current transformer; Primary rated current: 400 A; Secondary rated current: 5 A; Rated power: 5 VA; Accuracy class: 0.5; for billing purposes



Item No.: 855-305/500-509

Plug-in current transformer; Primary rated current: 500 A; Secondary rated current: 5 A; Rated power: 5 VA; Accuracy class: 0.5; for billing purposes

Item No.: 855-405/500-509

Plug-in current transformer; Primary rated current: 500 A; Secondary rated current: 5 A; Rated power: 5 VA; Accuracy class: 0.5; for billing purposes

Item No.: 855-305/600-509

Plug-in current transformer; Primary rated current: 600 A; Secondary rated current: 5 A; Rated power: 5 VA; Accuracy class: 0.5; for billing purposes

Item No.: 855-405/600-509

Plug-in current transformer; Primary rated current: 600 A; Secondary rated current: 5 A; Rated power: 5 VA; Accuracy class: 0.5; for billing purposes