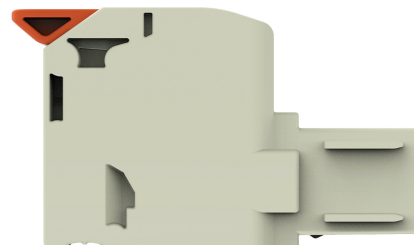
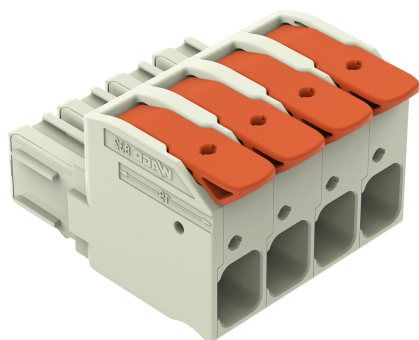


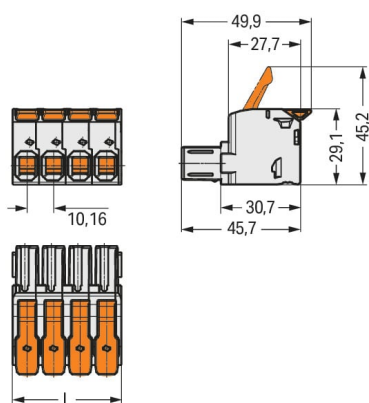
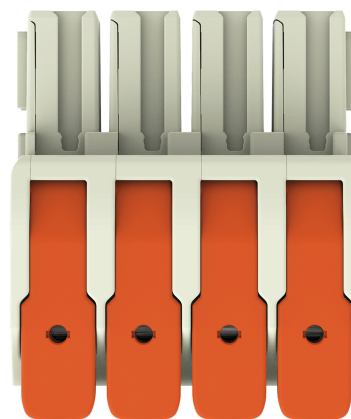
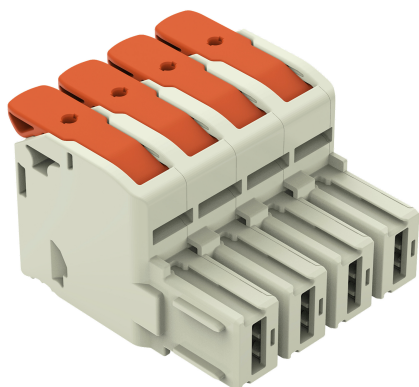
Data Sheet | Item Number: 832-1104

1-conductor female connector; lever; Push-in CAGE CLAMP®; 16 mm²; Pin spacing 10.16 mm; 4-pole; 100% protected against mismatching; Silver-plated contacts; 16,00 mm²; light gray

<https://www.wago.com/832-1104>

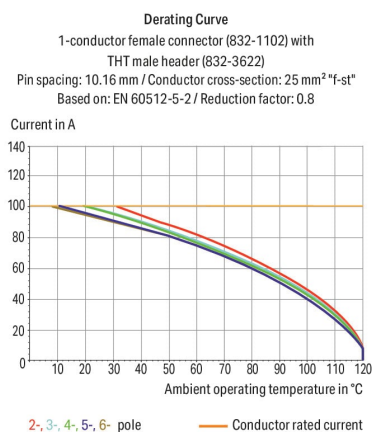


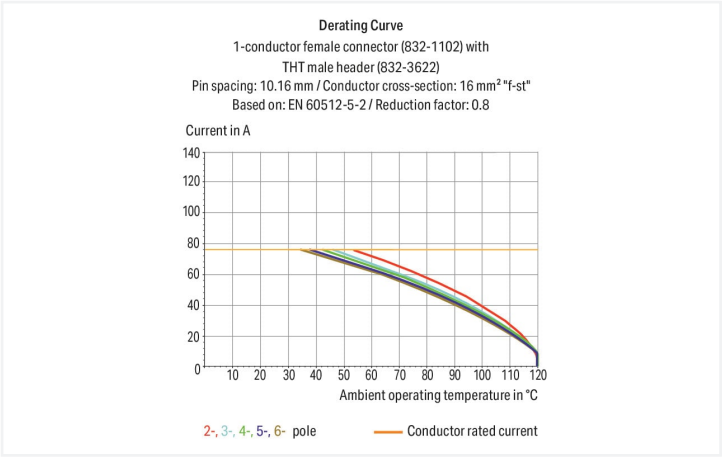
Color: ■ light gray



Dimensions in mm

$L = (\text{pole no.} \times \text{pin spacing}) + 1.3 \text{ mm}$







- Intuitive and tool-free lever actuation
- Universal connection for all conductor types
- Push-in termination of solid or ferruled conductors
- Test slot 0° and 90° to conductor entry
- 100% protected against mismating
- Coding option available

| Notes | |
|--------------------|--|
| Safety information | The MCS – <i>MULTI CONNECTION SYSTEM</i> includes connectors without breaking capacity in accordance with DIN EN 61984. When used as intended, these connectors must not be connected/disconnected when live or under load. When used as intended, these connectors must not be connected/disconnected when live or under load. The circuit design should ensure header pins, which can be touched, are not live when unmated. |
| Variants: | Other pole numbers Other versions (or variants) can be requested from WAGO Sales or configured at https://configurator.wago.com/ . |



Electrical data

| Ratings per | IEC/EN 60664-1 | | |
|----------------------|----------------|--------|--------|
| Overvoltage category | III | III | II |
| Pollution degree | 3 | 2 | 2 |
| Nominal voltage | 1000 V | 1000 V | 1000 V |
| Rated surge voltage | 8 kV | 8 kV | 8 kV |
| Rated current | 76 A | 76 A | 76 A |

| Approvals per | UL 1059 | | |
|---------------|---------|-------|---|
| Use group | B | C | D |
| Rated voltage | 600 V | 600 V | - |
| Rated current | 66 A | 66 A | - |

| Approvals per | UL 1977 |
|---------------|---------|
| Rated voltage | 600 V |
| Rated current | 85 A |

| Approvals per | CSA | | |
|---------------|-------|-------|---|
| Use group | B | C | D |
| Rated voltage | 600 V | 600 V | - |
| Rated current | 66 A | 66 A | - |

Connection data

| | |
|----------------------------|---|
| Connection points | 4 |
| Total number of potentials | 4 |
| Number of connection types | 1 |
| Number of levels | 1 |

| Connection 1 | |
|---|-------------------------------------|
| Connection technology | Push-in CAGE CLAMP® |
| Actuation type | Lever |
| Solid conductor | 0.75 ... 16 mm² / 18 ... 4 AWG |
| Fine-stranded conductor | 0.75 ... 25 mm² / 18 ... 4 AWG |
| Fine-stranded conductor; with insulated ferrule | 0.75 ... 16 mm² |
| Fine-stranded conductor; with uninsulated ferrule | 0.75 ... 16 mm² |
| Strip length | 18 ... 20 mm / 0.71 ... 0.79 inches |
| Pole number | 4 |
| Conductor entry direction to mating direction | 0° |

Physical data

| | |
|-------------|-------------------------|
| Pin spacing | 10.16 mm / 0.4 inches |
| Width | 41.94 mm / 1.651 inches |
| Height | 29.1 mm / 1.146 inches |
| Depth | 49.8 mm / 1.961 inches |

Mechanical data

| | |
|--------------------------|-----|
| Variable coding | Yes |
| Anti-rotation protection | Yes |

Plug-in connection

| | |
|------------------------------------|-------------------------|
| Contact type (pluggable connector) | Female connector/socket |
| Connector (connection type) | for conductor |
| Mismating protection | Yes |



| Material data | | |
|--|--|--|
| Note (material data) | | Information on material specifications can be found here |
| Color | | light gray |
| Material group | | I |
| Insulation material | | Polybutylene terephthalate (PBT) |
| Flammability class per UL94 | | V0 |
| Clamping spring material | | Chrome-nickel spring steel (CrNi) |
| Material of the additional spring for socket contact | | Chrome-nickel spring steel (CrNi) |
| Contact material | | Electrolytic copper (E _{Cu}) |
| Contact plating | | Silver |
| Fire load | | 0.924 MJ |
| Actuator color | | orange |
| Weight | | 53.7 g |

| Environmental requirements | | |
|----------------------------|--|-----------------|
| Limit temperature range | | -60 ... +120 °C |
| Processing temperature | | -35 ... +60 °C |

| Commercial data | | |
|-----------------------|--|---------------|
| eCl@ss 10.0 | | 27-14-11-06 |
| eCl@ss 9.0 | | 27-14-11-06 |
| ETIM 8.0 | | EC001284 |
| ETIM 7.0 | | EC001284 |
| PU (SPU) | | 20 pcs |
| Packaging type | | Box |
| Country of origin | | DE |
| GTIN | | 4055143736732 |
| Customs tariff number | | 85366990990 |

| Environmental Product Compliance | | |
|----------------------------------|--|-------------------------|
| RoHS Compliance Status | | Compliant, No Exemption |

Approvals / Certificates

General approvals



| Approval | Standard | Certificate Name |
|---------------------------------------|---------------|------------------|
| CB DEKRA Certification B.V. | IEC 61984 | NL-53084 |
| CSA CSA Group | C22.2 | 70180346 |
| KEMA/KEUR DEKRA Certification B.V. | EN 61984 | 71-104731 |
| UL Underwriters Laboratories Inc. | C22.2 No. 158 | E45172 |



Downloads

Environmental Product Compliance

Compliance Search

Environmental Product Compliance 832-1104

Download icon

Documentation

Additional Information

Technical Section

03.04.2019

pdf

2027.26 KB

Download icon

CAD/CAE-Data

CAD data

2D/3D Models 832-1104

Download icon

CAE data

ZUKEN Portal 832-1104

Download icon

PCB Design

Symbol and Footprint via SamacSys 832-1104

Download icon

Symbol and Footprint via Ultra Librarian 832-1104

Download icon

1 Compatible Products

1.1 System counterpart

1.1.1 Male connector/plug



Item No.: 832-1204/306-000
1-conductor male connector; lever; Push-in CAGE CLAMP®; 16 mm²; Pin spacing 10.16 mm; 4-pole; 100% protected against mismatching; DIN-35 rail/panel mounting; Silver-plated contacts; 16,00 mm²; light gray



Item No.: 832-1204
1-conductor male connector; lever; Push-in CAGE CLAMP®; 16 mm²; Pin spacing 10.16 mm; 4-pole; 100% protected against mismatching; Silver-plated contacts; 16,00 mm²; light gray



Item No.: 832-1204/000-9034
1-conductor male connector; lever; Push-in CAGE CLAMP®; 16 mm²; Pin spacing 10.16 mm; 4-pole; 100% protected against mismatching; Silver-plated contacts; direct marking; 16,00 mm²; light gray



Item No.: 832-1204/334-000
1-conductor male connector; lever; Push-in CAGE CLAMP®; 16 mm²; Pin spacing 10.16 mm; 4-pole; 100% protected against mismatching; Strain relief plate; Silver-plated contacts; 16,00 mm²; light gray



Item No.: 832-3624
THT male header; 1.2 x 1.2 mm solder pin; angled; 100% protected against mismatching; Silver-plated contacts; Pin spacing 10.16 mm; 4-pole; light gray














Item No.: 832-3644
THT male header; 1.2 x 1.2 mm solder pin; angled; 100% protected against mismatching; Silver-plated contacts; Pin spacing 10.16 mm; 4-pole; light gray



Item No.: 832-3604
THT male header; 1.2 x 1.2 mm solder pin; straight; 100% protected against mismatching; Silver-plated contacts; Pin spacing 10.16 mm; 4-pole; light gray



| | | | |
|---|--|--|--|
| 1.2 Optional Accessories | | | |
| 1.2.1 Coding | | | |
| 1.2.1.1 Coding | | | |
| <div></div> <div>Item No.: 832-500 Coding key carrier; orange</div> | | | |
| 1.2.2 Ferrule | | | |
| 1.2.2.1 Ferrule | | | |
| <div></div> <div>Item No.: 216-284 Ferrule; Sleeve for 1.5 mm² / AWG 16; insulated; electro-tin plated; electrolytic copper; gastight crimped; acc. to DIN 46228, Part 4/09.90; black</div> | <div></div> <div>Item No.: 216-289 Ferrule; Sleeve for 10 mm² / AWG 8; insulated; electro-tin plated; electrolytic copper; gastight crimped; acc. to DIN 46228, Part 4/09.90; red</div> | <div></div> <div>Item No.: 216-210 Ferrule; Sleeve for 16 mm² / AWG 6; insulated; electro-tin plated; electrolytic copper; gastight crimped; acc. to DIN 46228, Part 4/09.90; blue</div> | <div></div> <div>Item No.: 216-286 Ferrule; Sleeve for 2.5 mm² / AWG 14; insulated; electro-tin plated; electrolytic copper; gastight crimped; acc. to DIN 46228, Part 4/09.90; blue</div> |
| <div></div> <div>Item No.: 216-287 Ferrule; Sleeve for 4 mm² / AWG 12; insulated; electro-tin plated; electrolytic copper; gastight crimped; acc. to DIN 46228, Part 4/09.90; gray</div> | <div></div> <div>Item No.: 216-288 Ferrule; Sleeve for 6 mm² / AWG 10; insulated; electro-tin plated; electrolytic copper; gastight crimped; acc. to DIN 46228, Part 4/09.90; yellow</div> | | |
| 1.2.3 Locking system | | | |
| 1.2.3.1 Locking system | | | |
| <div></div> <div>Item No.: 832-522 center locking; for female connectors; for even pole numbers; 1 part; orange</div> | | | |
| 1.2.3.2 Strain relief plate | | | |
| <div></div> <div>Item No.: 832-542 center locking with strain relief; for female and male connectors; 20.2 mm wide; 2 parts; Pin spacing 10.16 mm; 2-pole; orange</div> | | | |
| 1.2.4 Mounting adapter | | | |
| 1.2.4.1 Mounting accessories | | | |
| <div></div> <div>Item No.: 832-1032 Mounting adapter; for DIN-35 rail/panel mounting; 2 parts; Pin spacing 10.16 mm; light gray</div> | <div></div> <div>Item No.: 832-1038 Mounting adapter; for DIN-35 rail/panel mounting; 3 parts; Pin spacing 10.16 mm; light gray</div> | | |

1.2.5 Strain relief

1.2.5.1 Strain relief plate

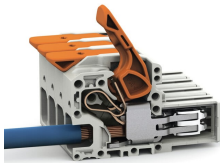


Item No.: 832-544
center locking with strain relief; for female and male connectors; 40.6 mm wide; 2 parts; Pin spacing 10.16 mm; 4-pole; orange

Item No.: 832-534
Strain relief plate; for female and male connectors; 40.6 mm wide; 1 part; Pin spacing 10.16 mm; 4-pole; light gray

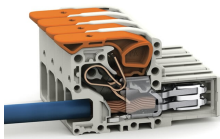
Installation Notes

Conductor termination



Insert fine-stranded conductors – and remove all conductors – via operating tool.

Conductor termination



Fine-stranded wires, connected