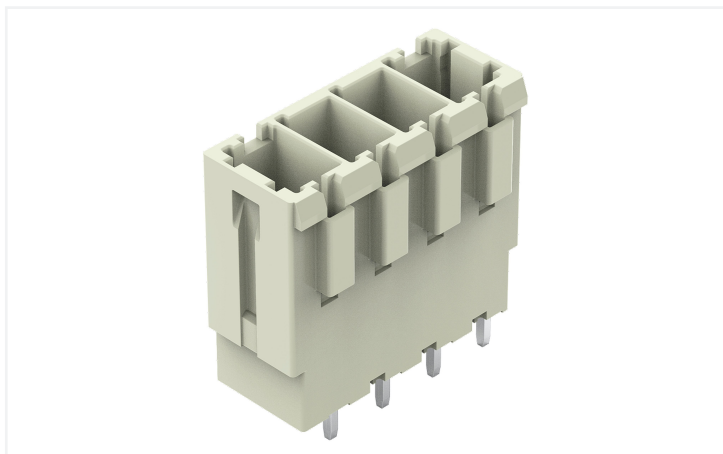


## Data Sheet | Item Number: 831-3604

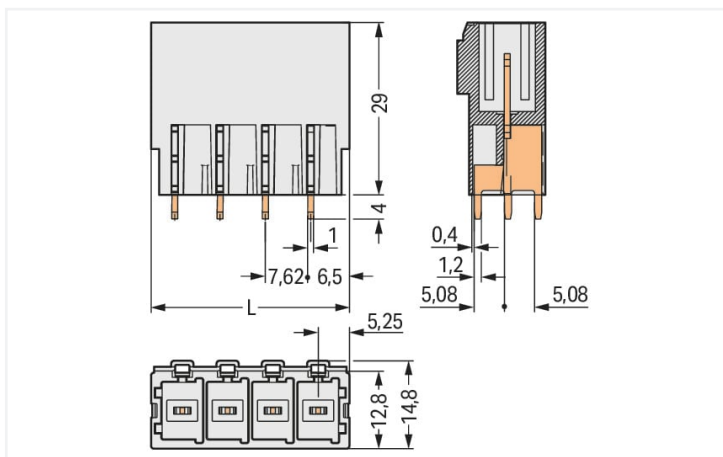
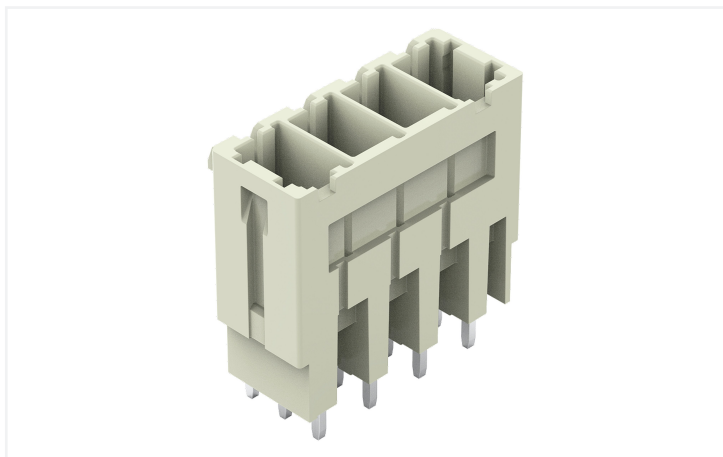
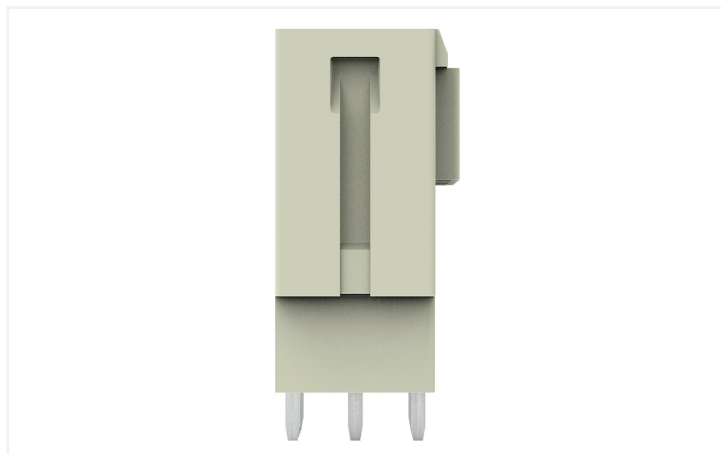
THT male header; 1.0 x 1.2 mm solder pin; straight; 100% protected against mismatching; Pin spacing 7.62 mm; 4-pole; light gray

<https://www.wago.com/831-3604>



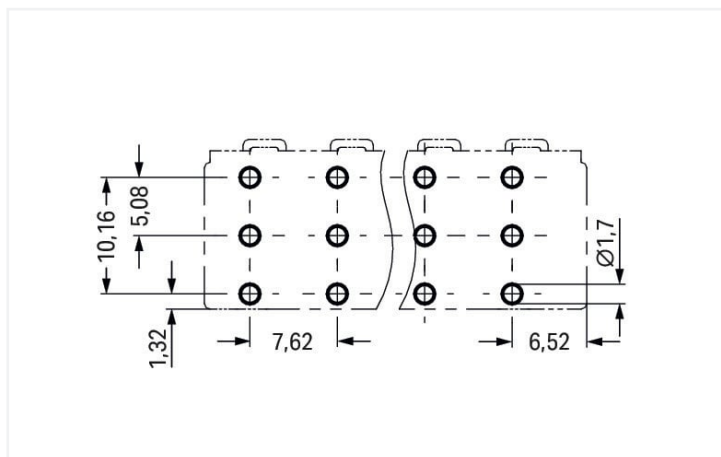
Color: ■ light gray

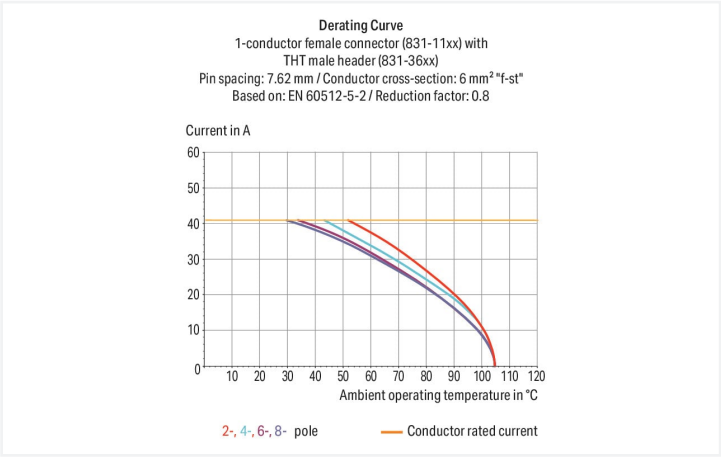
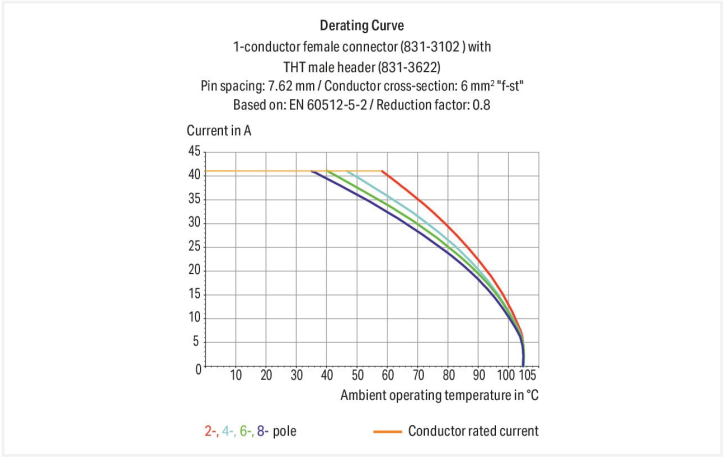
Similar to illustration



Dimensions in mm

$L = (\text{pole no.} - 1) \times \text{pin spacing} + 10.5 \text{ mm}$







- Male headers may be mounted horizontally or vertically via straight or angled solder pins
- Three solder pins per pole provide high electrical and mechanical stability
- 100 % protected against mismatching
- Coding via coding fingers

Notes	
Safety information	The MCS – MULTI CONNECTION SYSTEM includes connectors without breaking capacity in accordance with DIN EN 61984. When used as intended, these connectors must not be connected/disconnected when live or under load. When used as intended, these connectors must not be connected/disconnected when live or under load. The circuit design should ensure header pins, which can be touched, are not live when unmated.
Variants:	Other pole numbers Protection against PCB mounting errors Other versions (or variants) can be requested from WAGO Sales or configured at <a href="https://configurator.wago.com/">https://configurator.wago.com/</a> .



Electrical data				
Ratings per		IEC/EN 60664-1		
Overvoltage category	III	III	II	
Pollution degree	3	2	2	
Nominal voltage	500 V	630 V	1000 V	
Rated surge voltage	6 kV	6 kV	6 kV	
Rated current	41 A	41 A	41 A	
Approvals per		CSA		
Use group	B	C	D	
Rated voltage	-	300 V	600 V	
Rated current	-	41 A	5 A	

Approvals per				UL 1059	
Use group		B	C	D	
Rated voltage		-	300 V	600 V	
Rated current		-	42 A	5 A	

Connection data					
Total number of potentials		4	Connection 1		
Number of connection types		1	Pole number		4
Number of levels		1			
Physical data					
Pin spacing		7.62 mm / 0.3 inches			
Width		33.36 mm / 1.313 inches			
Height		33 mm / 1.299 inches			
Height from the surface		29 mm / 1.142 inches			
Depth		14.8 mm / 0.583 inches			
Solder pin length		4 mm			
Solder pin dimensions		1 x 1.2 mm			
Drilled hole diameter with tolerance		1.7 <sup>(+0.1)</sup> mm			
Mechanical data					
Variable coding		Yes			
Anti-rotation protection		Yes			
Plug-in connection					
Contact type (pluggable connector)		Male connector/plug			
Connector (connection type)		for PCB			
Mismating protection		Yes			
Mating direction to the PCB		90 °			
PCB contact					
PCB contact		THT			
Solder pin arrangement		over the entire male connector (in-line)			
Number of solder pins per potential		3			







Material data		
Note (material data)		<a href="#">Information on material specifications can be found here</a>
Color	light gray	
Material group	I	
Insulation material	Polyamide (PA66)	
Flammability class per UL94	V0	
Contact material	Electrolytic copper (E <sub>CU</sub> )	
Contact plating	Tin	
Fire load	0 MJ	
Weight	11.5 g	

Environmental requirements		
Limit temperature range	-60 ... +105 °C	
Processing temperature	-35 ... +60 °C	

Commercial data		
Product Group	3 (Multi Conn. System)	
eCl@ss 10.0	27-44-04-02	
eCl@ss 9.0	27-44-04-02	
ETIM 8.0	EC002637	
ETIM 7.0	EC002637	
PU (SPU)	24 pcs	
Packaging type	Box	
Country of origin	PL	
GTIN	4045454002121	
Customs tariff number	85366930000	

Environmental Product Compliance		
RoHS Compliance Status	Compliant, No Exemption	

Approvals / Certificates					
General approvals			Declarations of conformity and manufacturer's declarations		
  					
Approval	Standard	Certificate Name	Approval	Standard	Certificate Name
CB DEKRA Certification B.V.	IEC 61984	NL-61360/M1	Railway WAGO GmbH & Co. KG	-	Railway Ready
CSA DEKRA Certification B.V.	C22.2	1466354			
KEMA/KEUR DEKRA Certification B.V.	EN 61984	71-116057			
UR Underwriters Laboratories Inc.	UL 1059	E45172			



Approvals for marine applications



Approval	Standard	Certificate Name
LR Lloyds Register	IEC 61984	96/20035 (E5)

Downloads

Environmental Product Compliance

Compliance Search
Environmental Product Compliance 831-3604

Documentation

Additional Information
Technical Section
03.04.2019
pdf
2027.26 KB

CAD/CAE-Data

CAD data
2D/3D Models
831-3604

CAE data
EPLAN Data Portal
831-3604

ZUKEN Portal
831-3604

PCB Design
Symbol and Footprint via SamacSys
831-3604
Symbol and Footprint via Ultra Librarian
831-3604

1 Compatible Products

1.1 System counterpart

1.1.1 Female connector/socket



<a href="#">Item No.: 831-1104</a>
1-conductor female connector; lever; Push-in CAGE CLAMP®; 10 mm²; Pin spacing 7.62 mm; 4-pole; 100% protected against mismatching; 10,00 mm²; light gray



<a href="#">Item No.: 831-1104/320-000</a>
1-conductor female connector; lever; Push-in CAGE CLAMP®; 10 mm²; Pin spacing 7.62 mm; 4-pole; 100% protected against mismatching; Centered locking levers; 10,00 mm²; light gray



<a href="#">Item No.: 831-1104/322-000</a>
1-conductor female connector; lever; Push-in CAGE CLAMP®; 10 mm²; Pin spacing 7.62 mm; 4-pole; 100% protected against mismatching; Centered locking levers; 10,00 mm²; light gray



<a href="#">Item No.: 831-1104/037-000</a>
1-conductor female connector; lever; Push-in CAGE CLAMP®; 10 mm²; Pin spacing 7.62 mm; 4-pole; 100% protected against mismatching; Lateral locking levers; 10,00 mm²; light gray

1.1.1 Female connector/socket



**Item No.: 831-1104/038-000**  
1-conductor female connector; lever; Push-in CAGE CLAMP®; 10 mm²; Pin spacing 7.62 mm; 4-pole; 100% protected against mismatching; Lateral locking levers; 10,00 mm²; light gray



**Item No.: 831-3104**  
1-conductor female connector; Push-in CAGE CLAMP®; 10 mm²; Pin spacing 7.62 mm; 4-pole; 100% protected against mismatching; 10,00 mm²; light gray



**Item No.: 831-3104/000-9037**  
1-conductor female connector; Push-in CAGE CLAMP®; 10 mm²; Pin spacing 7.62 mm; 4-pole; 100% protected against mismatching; direct marking; 10,00 mm²; light gray



**Item No.: 831-3104/135-000**  
1-conductor female connector; Push-in CAGE CLAMP®; 10 mm²; Pin spacing 7.62 mm; 4-pole; 100% protected against mismatching; Gripping plate; 10,00 mm²; light gray



**Item No.: 831-3104/037-000**  
1-conductor female connector; Push-in CAGE CLAMP®; 10 mm²; Pin spacing 7.62 mm; 4-pole; 100% protected against mismatching; Lateral locking levers; 10,00 mm²; light gray



**Item No.: 831-3104/037-9037**  
1-conductor female connector; Push-in CAGE CLAMP®; 10 mm²; Pin spacing 7.62 mm; 4-pole; 100% protected against mismatching; Lateral locking levers; direct marking; 10,00 mm²; light gray



**Item No.: 831-3524**  
THT female header; angled; Pin spacing 7.62 mm; 4-pole; 100% protected against mismatching; 1.0 x 1.2 mm solder pin; light gray



**Item No.: 831-3504**  
THT female header; straight; Pin spacing 7.62 mm; 4-pole; 100% protected against mismatching; 1.0 x 1.2 mm solder pin; light gray

1.2 Optional Accessories

1.2.1 Coding

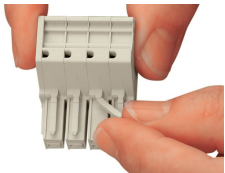
1.2.1.1 Coding



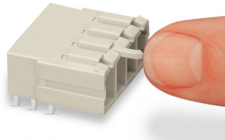
**Item No.: 831-500**  
Coding pin carrier with six coding pins; orange

Installation Notes

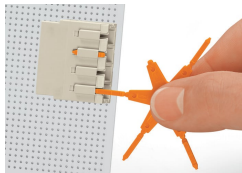
Coding



Break or cut off coding pin from female connector.



Insert coding pin into male header (break first) until it engages.



Coding a THT male header by inserting a coding pin.