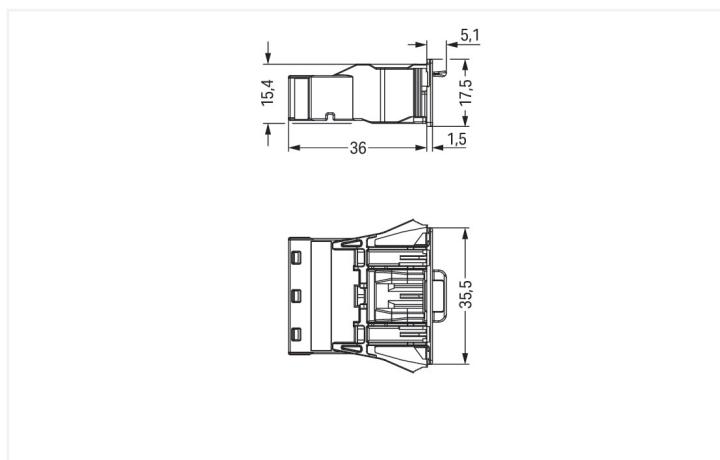
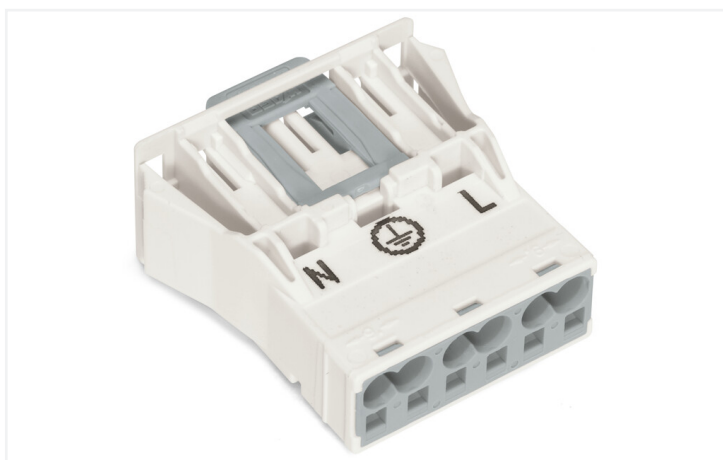
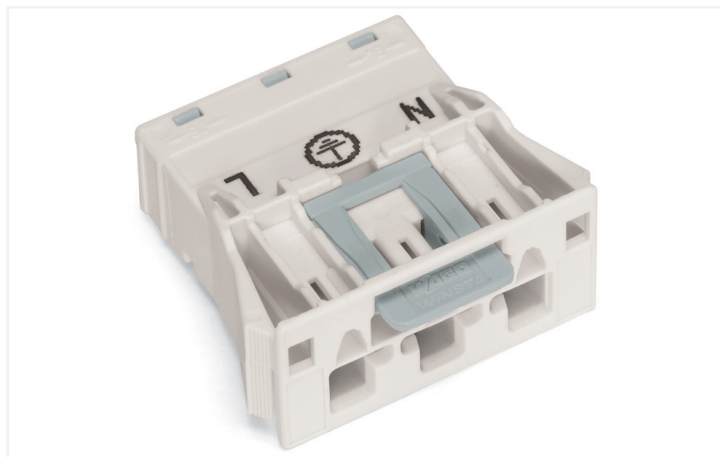
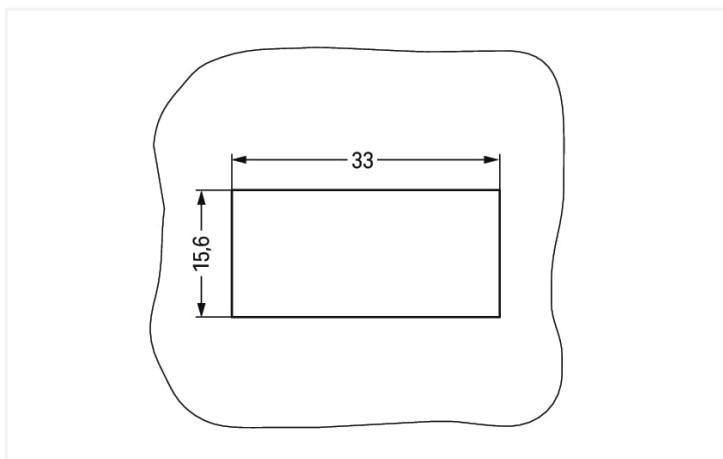


Color: ■ white



Dimensions in mm



Dimensions in mm
 Plate thickness: 0.5 ... 2 mm
 Cutout tolerance: + 0.1 mm

Please note!

Male connector/plug WINSTA® MIDI 3-pole

Use effective pluggable connections instead of laborious screw connections: With the WINSTA® MIDI male connector/plug rated current 25 A. Our pluggable installation connectors with spring pressure connection technology function completely without screw connections. They allow fast, efficient, error-free installation in numerous applications. The coding options reduce installation errors, allowing fast, secure wiring of all components. The pluggable installation connector is protected in accordance with protection type IP20 (When mated: IP2xC (These compact connectors are not designed for use in open, easily accessible areas!)). This means that users' fingers will never come into contact with live contact elements. Thanks to the color coding and mechanical A coding of WINSTA® MIDI pluggable installation connectors, you can clearly distinguish different circuits. This pluggable installation connector can be used for electrical currents up to 25 A. Thus the product is also suitable for high power loads. The WINSTA® MIDI Pluggable Connection System with Push-in CAGE CLAMP® spring pressure connection technology facilitates exemplary electrification. Due to the integrated test slot, it is possible to check connections even when they are plugged in. That saves time and reduces installation labor and expense.

Push-in CAGE CLAMP® spring pressure connection technology – pluggable installation instead of laborious screw connections!

WINSTA® is the pluggable connection system that is perfectly tailored to the strict requirements of electrical installation. It offers fast, secure and, above all, error-free installation of components and cables. Enjoy the benefits of the pluggable version of our maintenance-free spring pressure connection technology too! Plan your installation with with protection type IP20 from WAGO.

- effective protection against mismatching
- simple circuits
- with A coding for a great number of applications
- ready to install and use immediately
- quick replacement of defective units during ongoing operation

| Notes | |
|-------|---|
| Note | The snap-in connectors must be relieved of tensile and transverse forces. A surface finish can influence the edge radius of the cutouts. This may affect the snap-in socket fit, so ensure an adequate fit before use. In addition, the punched edge should be on the inside for punched cutouts. The wings of the snap-in connectors must not be mechanically stressed for a long period before use (e.g., due to a pre-locking position). |

| Electrical data | | | | | | | | |
|----------------------------|--|--|-----|----|---------------|--|---------|--|
| Ratings per | | IEC/EN 60664-1 | | | Approvals per | | UL 1977 | |
| Overvoltage category | | III | III | II | Rated voltage | | 600 V | |
| Pollution degree | | 3 | 2 | 2 | Rated current | | 23 A | |
| Nominal voltage | | 250 V | - | - | | | | |
| Rated surge voltage | | 4 kV | - | - | | | | |
| Rated current | | 25 A | - | - | | | | |
| | | | | | | | | |
| General information | | | | | | | | |
| Note on contact resistance | | approx. 1 mΩ of contact resistance approx. 0.25 mΩ contact transition plug/ socket | | | | | | |

| Connection data | | | |
|----------------------------|----------------------|---|----------------------------------|
| Connection points | 6 | Connection 1 | |
| Total number of potentials | 3 | Connection technology | Push-in CAGE CLAMP® |
| PE function | Preceding PE contact | Actuation type | Operating tool Push-in |
| | | Nominal cross-section | 4 mm² / 12 AWG |
| | | Solid conductor | 0.5 ... 4 mm² / 20 ... 12 AWG |
| | | Solid conductor; push-in termination | 1.5 ... 4 mm² / 16 ... 12 AWG |
| | | Stranded conductor | 0.5 ... 2.5 mm² / 20 ... 14 AWG |
| | | Fine-stranded conductor | 0.5 ... 4 mm² / 20 ... 12 AWG |
| | | Fine-stranded conductor; with insulated ferrule | 0.25 ... 1.5 mm² / 20 ... 16 AWG |



| Connection 1 | |
|--|----------------------------------|
| Fine-stranded conductor; with uninsulated ferrule | 0.25 ... 2.5 mm² / 20 ... 14 AWG |
| Fine-stranded conductor; with ferrule; push-in termination | 1.5 mm² / 16 AWG |
| Strip length | 9 mm / 0.35 inches |
| Pole number | 3 |
| Conductor entry direction to mating direction | 0 ° |

| Physical data | |
|---------------|------------------------|
| Pin spacing | 10 mm / 0.394 inches |
| Width | 35.5 mm / 1.398 inches |
| Height | 17.5 mm / 0.689 inches |
| Depth | 41.1 mm / 1.618 inches |

| Mechanical data | |
|---|---|
| Application | General mains applications |
| Coding | A |
| Variable coding | Yes |
| Marking | N L |
| Potential marking | N L |
| Mating force of a plug-in connection | approx. 20 ... 70 N (depending on pole number) |
| Retention force of a plug-in connection | Locked: > 80 N |
| Unmating force of a plug-in connection | Unlocked: approx. 20 ... 70 N (depending on pole number) |
| Number of mating cycles | 200, without resistive load |
| Housing sheet thickness | 0.5 ... 2 mm / 0.02 ... 0.079 inches |
| Mounting type | Snap-in flange |
| Protection type | IP20; When mated: IP2xC (These compact connectors are not designed for use in open, easily accessible areas!) |

| Plug-in connection | |
|------------------------------------|--|
| Contact type (pluggable connector) | Male connector/plug |
| Connector (connection type) | for conductor |
| Mismating protection | Yes |
| Note on mismating protection | All WINSTA® components are 100% protected against mismating when: a.) plugging different numbers of poles b.) plugging while rotated 180 c.) plugging while laterally staggered d.) plugging one pole |
| Locking lever | Yes |
| Locking of plug-in connection | Locking lever |
| Note on locking system | All connectors for mounted installations (snap-in versions for lighting fixtures or devices, all types of PCB and distribution connectors) are factory-equipped with locking levers to ensure plugs and sockets are securely locked. Additional locking levers are only required for flying leads (plug/socket). |






| Material data | | |
|-----------------------------|---|--|
| Note (material data) | | Information on material specifications can be found here |
| Color | white | |
| Insulation material | Polyamide (PA66) | |
| Flammability class per UL94 | V0 | |
| Clamping spring material | Chrome-nickel spring steel (CrNi) | |
| Contact material | Copper or copper alloy; surface-treated | |
| Contact plating | Tin | |
| Fire load | 0.261 MJ | |
| Weight | 12.2 g | |

| Environmental requirements | | |
|--|--|--|
| Processing temperature | -5 ... +40 °C | |
| Continuous operating temperature | -35 ... +85 °C | |
| Note on continuous operating temperature | Insulating parts for temperatures ≤ 105 °C | |

| Commercial data | | |
|-----------------------|---------------|--|
| Product Group | 20 (Winsta) | |
| eCl@ss 10.0 | 27-44-06-02 | |
| eCl@ss 9.0 | 27-44-06-02 | |
| ETIM 8.0 | EC002566 | |
| ETIM 7.0 | EC002566 | |
| PU (SPU) | 100 pcs | |
| Packaging type | Box | |
| Country of origin | DE | |
| GTIN | 4044918254229 | |
| Customs tariff number | 85366990990 | |

| Environmental Product Compliance | | |
|----------------------------------|-------------------------|--|
| RoHS Compliance Status | Compliant, No Exemption | |

Approvals / Certificates

| General approvals | | | Declarations of conformity and manufacturer's declarations | | |
|--|-----------|-----------|--|----------|------------------|
|    | | | Approval | Standard | Certificate Name |
| CCA DEKRA Certification B.V. | EN 61535 | 71-123228 | EU-Declaration of Confor- mity WAGO GmbH & Co. KG | - | - |
| CCA DEKRA Certification B.V. | IEC 61535 | NL -84761 | | | |
| cURus Underwriters Laboratories Inc. | UL 1977 | E45171 | | | |
| cURus Underwriters Laboratories Inc. | UL 1059 | E 45172 | | | |



Approvals for marine applications



| Approval | Standard | Certificate Name |
|---|-----------|------------------|
| ABS American Bureau of Ship- ping | - | 19-HG1868589-PDA |
| DNV GL Det Norske Veritas, Ger- manischer Lloyd | - | TAE00001Z6 |
| LR Lloyds Register | IEC 61984 | LR22429487TA |

Downloads

Environmental Product Compliance

| |
|---|
| Compliance Search |
| Environmental Product Compliance 770-733 |



Documentation

| | | | |
|----------|------------|-----------------|--|
| Bid Text | | | |
| 770-733 | 19.02.2019 | xml 2.89 KB | |
| 770-733 | 08.06.2015 | doc 23.00 KB | |

CAD/CAE-Data

| |
|----------------------|
| CAD data |
| 2D/3D Models 770-733 |



| |
|------------------------------|
| CAE data |
| EPLAN Data Portal 770-733 |
| WSCAD Universe 770-733 |
| ZUKEN Portal 770-733 |



1 Compatible Products

1.1 System counterpart

1.1.1 Cable assembly



Item No.: 771-9993/106-102
pre-assembled connecting cable; Eca;
Socket/open-ended; 3-pole; Cod. A;
H05VV-F 3G 1.5 mm²; 1 m; 1,50 mm²; white

Item No.: 771-9993/006-102
pre-assembled interconnecting cable;
Eca; Socket/plug; 3-pole; Cod. A; H05VV-
F 3G 1.5 mm²; 1 m; 1,50 mm²; white

1.1.2 Female connector/socket



Item No.: 770-223
Socket; 3-pole; Cod. A; 4,00 mm²; white



Item No.: 770-123
Socket; with strain relief housing; 3-pole; Cod. A; 4,00 mm²; white



Item No.: 770-223/035-050
Socket; with strain relief housing; 3-pole; Cod. A; 4,00 mm²; white

1.2 Optional Accessories

1.2.1 Coding

1.2.1.1 Coding



Item No.: 770-401
Coding pin; for plugs; Plastic; gray

1.2.2 Cover

1.2.2.1 Cover



Item No.: 770-643
Lockout cap; 3-pole; for cutouts; Plastic; black



Item No.: 770-693
Lockout cap; 3-pole; for cutouts; Plastic; white



Item No.: 770-360
Lockout cap; for plugs; 5-pole; separable; yellow

1.2.3 Tool

1.2.3.1 Operating tool



Item No.: 770-383
Operating tool; 3-way; green



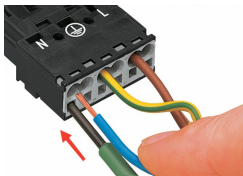
Item No.: 210-719
Operating tool; Blade: 2.5 x 0.4 mm; with a partially insulated shaft

Installation Notes

Conductor termination



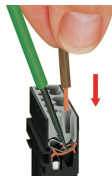
- 1. Strip length, outer insulation = 35 mm (2-pole), 55 mm (3- to 5-pole)
- 2. Strip length = 9 mm
- 3. Extended ground conductor = 8 mm



To terminate fine-stranded conductors, open the clamping unit via screwdriver (2.5 mm blade width) and insert a stripped conductor until it hits the backstop.

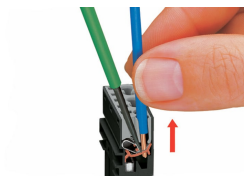


Insert the stripped solid conductor until it hits the backstop.



To terminate fine-stranded conductors, open the clamping unit via screwdriver (2.5 mm blade width) and insert a stripped conductor until it hits the backstop.

Conductor removal



To remove the conductor, actuate the clamp via screwdriver (2.5 mm blade width) and pull out the conductor.



Seal unused cutout with lockout cap.