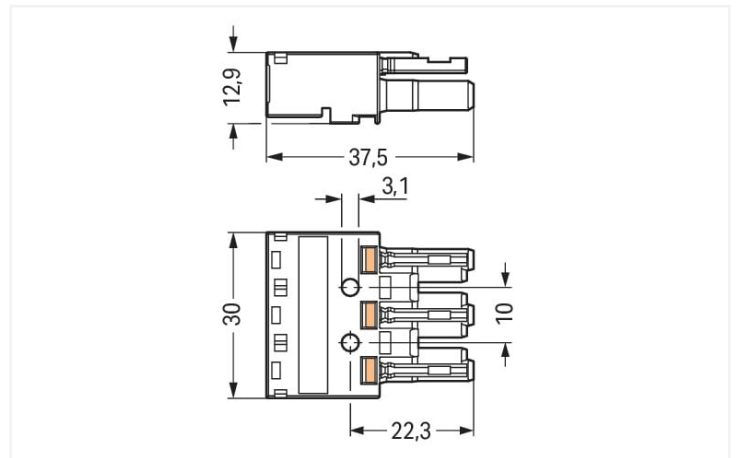
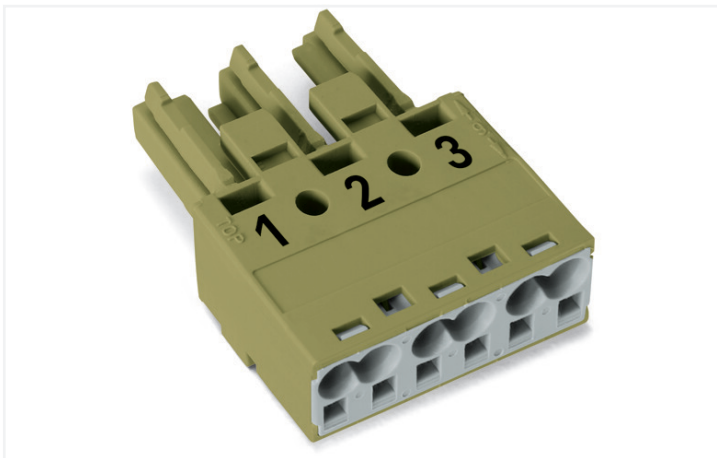
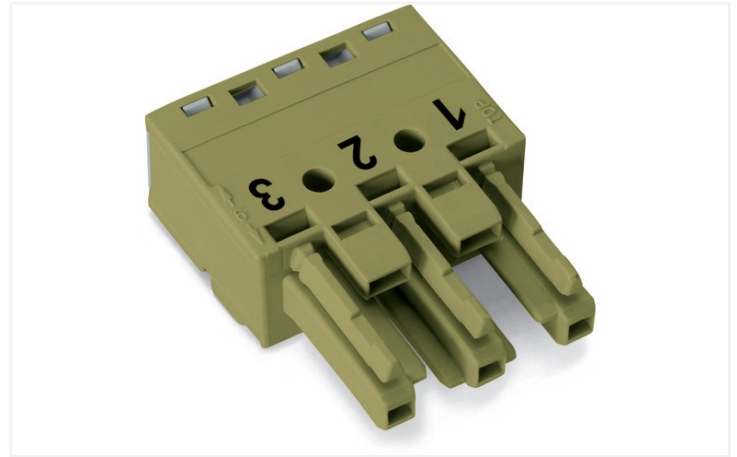




Color: ■ light green



Dimensions in mm

Female connector/socket *WINSTA*® MIDI rated current 25 A

The *WINSTA*® MIDI female connector/socket 3-pole supports fast, reliable installation. Whether on PCBs, in control cabinets or for connecting lights – pluggable installation connectors from WAGO allow you to establish connections according to various requirements in seconds. For greater security in electrical installations, the pluggable installation connector is equipped with mechanical protection against mismatching. The pluggable installation connector is protected against ingress by solid objects in accordance with protection type IP20 (When mated and secured with a strain relief housing: IP2xC (These compact connectors are not designed for use in open, easily accessible areas!)). Solutions like the *WINSTA*® MIDI pluggable installation connectors with B coding are appropriate for applications involving process control, such as for lighting or within data networks. This pluggable installation connector is designed for a voltage load of up to 25 A. As a result, it can also be used for high power loads. Our *WINSTA*® MIDI product line guarantees flexibility for the electrical installation. Through its Push-in CAGE CLAMP® spring pressure connection technology, it ensures time-saving, error-free installation and offers flexibility and customization for meeting all installation requirements.

Push-in CAGE CLAMP® spring pressure connection technology – pluggable installation instead of laborious screw connections!

The *WINSTA*® Pluggable Connection System is ideally tailored to the very strict requirements of building installation. It makes electrical installation pluggable, and therefore more efficient, more reliable, and error-free. Using this pre-assembled system decreases time spent on assembly and installation errors at the construction site. Now you can also cut installation expenses without compromising safety and quality: with protection type IP20 reduces the need for servicing and prevents unnecessary downtime.

- protection against mismatching eliminates errors
- for automation controllers
- with B coding for controllers such as lighting fixtures and sun blinds
- custom-engineered solutions
- fast, secure installation



| Notes | |
|-----------|---|
| Variants: | Other pole markings Other versions (or variants) can be requested from WAGO Sales or configured at https://configurator.wago.com/ . |

| Electrical data | | | |
|----------------------|-------|----------------|----|
| Ratings per | | IEC/EN 60664-1 | |
| Overvoltage category | | III | II |
| Pollution degree | | 3 | 2 |
| Nominal voltage | 250 V | - | - |
| Rated surge voltage | 4 kV | - | - |
| Rated current | 25 A | - | - |

| Approvals per | | UL 1977 |
|---------------|--|---------|
| Rated voltage | | 600 V |
| Rated current | | 23 A |

| General information | |
|----------------------------|--|
| Note on contact resistance | approx. 1 mΩ of contact resistance approx. 0.25 mΩ contact transition plug/ socket |

| Connection data | |
|----------------------------|---|
| Connection points | 6 |
| Total number of potentials | 3 |

| Connection 1 | |
|--|----------------------------------|
| Connection technology | Push-in CAGE CLAMP® |
| Actuation type | Operating tool Push-in |
| Nominal cross-section | 4 mm² / 12 AWG |
| Solid conductor | 0.5 ... 4 mm² / 20 ... 12 AWG |
| Solid conductor; push-in termination | 1.5 ... 4 mm² / 16 ... 12 AWG |
| Stranded conductor | 0.5 ... 2.5 mm² / 20 ... 14 AWG |
| Fine-stranded conductor | 0.5 ... 4 mm² / 20 ... 12 AWG |
| Fine-stranded conductor; with insulated ferrule | 0.25 ... 1.5 mm² / 20 ... 16 AWG |
| Fine-stranded conductor; with uninsulated ferrule | 0.25 ... 2.5 mm² / 20 ... 14 AWG |
| Fine-stranded conductor; with ferrule; push-in termination | 1.5 mm² / 16 AWG |
| Strip length | 9 mm / 0.35 inches |
| Pole number | 3 |
| Conductor entry direction to mating direction | 0° |

| Physical data | |
|---------------|------------------------|
| Pin spacing | 10 mm / 0.394 inches |
| Width | 30 mm / 1.181 inches |
| Height | 12.9 mm / 0.508 inches |
| Depth | 37.5 mm / 1.476 inches |



| Mechanical data | |
|---|--|
| Application | Control technology |
| Coding | B |
| Variable coding | Yes |
| Marking | 1 2 3 |
| Potential marking | 1 2 3 |
| Mating force of a plug-in connection | approx. 20 ... 70 N (depending on pole number) |
| Retention force of a plug-in connection | Locked: > 80 N |
| Unmating force of a plug-in connection | Unlocked: approx. 20 ... 70 N (depending on pole number) |
| Number of mating cycles | 200, without resistive load |
| Protection type | IP20; When mated and secured with a strain relief housing: IP2xC (These compact connectors are not designed for use in open, easily accessible areas!) |

| Plug-in connection | |
|------------------------------------|--|
| Contact type (pluggable connector) | Female connector/socket |
| Connector (connection type) | for conductor |
| Mismating protection | Yes |
| Note on mismating protection | All WINSTA® components are 100% protected against mismating when: a.) plugging different numbers of poles b.) plugging while rotated 180 c.) plugging while laterally staggered d.) plugging one pole |
| Locking lever | Can be retrofitted |
| Locking of plug-in connection | Locking lever |
| Note on locking system | All connectors for mounted installations (snap-in versions for lighting fixtures or devices, all types of PCB and distribution connectors) are factory-equipped with locking levers to ensure plugs and sockets are securely locked. Additional locking levers are only required for flying leads (plug/socket). |

| Material data | |
|-----------------------------|--|
| Note (material data) | Information on material specifications can be found here |
| Color | light green |
| Cover color | gray |
| Material group | I |
| Insulation material | Polyamide (PA66) |
| Flammability class per UL94 | V0 |
| Clamping spring material | Chrome-nickel spring steel (CrNi) |
| Contact material | Copper or copper alloy; surface-treated |
| Contact plating | Tin |
| Fire load | 0.163 MJ |
| Weight | 9.6 g |

| Environmental requirements | |
|--|--|
| Processing temperature | -5 ... +40 °C |
| Continuous operating temperature | -35 ... +85 °C |
| Note on continuous operating temperature | Insulating parts for temperatures ≤ 105 °C |






| Commercial data | | |
|-----------------------|---------------|--|
| Product Group | 20 (Winsta) | |
| eCl@ss 10.0 | 27-44-06-05 | |
| eCl@ss 9.0 | 27-44-06-05 | |
| ETIM 8.0 | EC002560 | |
| ETIM 7.0 | EC002560 | |
| PU (SPU) | 100 pcs | |
| Packaging type | Box | |
| Country of origin | DE | |
| GTIN | 4050821445012 | |
| Customs tariff number | 85366990990 | |

| Environmental Product Compliance | | |
|----------------------------------|-------------------------|--|
| RoHS Compliance Status | Compliant, No Exemption | |

Approvals / Certificates

| General approvals | | | Declarations of conformity and manufacturer's declarations | | |
|--|-----------|------------|--|----------|------------------|
|    | | | Approval | Standard | Certificate Name |
| CCA DEKRA Certification B.V. | IEC 61984 | NL-32104 | EU-Declaration of Confor- mity WAGO GmbH & Co. KG | - | - |
| CCA DEKRA Certification B.V. | EN 61984 | 2173495.01 | UK-Declaration of Confor- mity WAGO GmbH & Co. KG | - | - |
| cURus Underwriters Laboratories Inc. | UL 1977 | E45171 | | | |
| cURus Underwriters Laboratories Inc. | UL 1059 | E 45172 | | | |

Approvals for marine applications

|    | | |
|--|-----------|------------------|
| Approval | Standard | Certificate Name |
| ABS American Bureau of Ship- ping | - | 19-HG1868589-PDA |
| DNV GL Det Norske Veritas, Ger- manischer Lloyd | - | TAE00001Z6 |
| LR Lloyds Register | IEC 61984 | LR22429487TA |



Downloads

Environmental Product Compliance

| | | | |
|--|--|--|--|
| Compliance Search | | | |
| Environmental Product Compliance 770-263 | | | |

Documentation

| | | | |
|----------|------------|-----------------|--|
| Bid Text | | | |
| 770-263 | 19.02.2019 | xml 2.96 KB | |
| 770-263 | 08.06.2015 | doc 24.00 KB | |

CAD/CAE-Data

| | |
|----------------------|--|
| CAD data | |
| 2D/3D Models 770-263 | |
| | |

| | |
|------------------------|--|
| CAE data | |
| WSCAD Universe 770-263 | |
| | |
| ZUKEN Portal 770-263 | |
| | |

1 Compatible Products

1.1 System counterpart

1.1.1 Cable assembly



Item No.: 771-9993/205-105
pre-assembled connecting cable; Eca; Plug/open-ended; 3-pole; Cod. B; H05VV-F 3 x 1.0 mm²; 1 m; 1,00 mm²; light green



Item No.: 771-9993/005-105
pre-assembled interconnecting cable; Eca; Socket/plug; 3-pole; Cod. B; H05VV-F 3 x 1.0 mm²; 1 m; 1,00 mm²; light green

1.1.2 Distribution connector



Item No.: 770-1715
3-way distribution connector; 3-pole; Cod. B; 1 input; 3 outputs; light green



Item No.: 770-1765
h-distribution connector; 3-pole; Cod. B; 1 input; 2 outputs; outputs on both sides; 2 locking levers; light green



Item No.: 770-1768
h-distribution connector; 3-pole; Cod. B; 1 input; 2 outputs; outputs on both sides; 3 locking levers; for flying leads; light green



Item No.: 770-1662
h-distribution connector; 3-pole; Cod. B; 1 input; 2 outputs; outputs on one side; 2 locking levers; light green



Item No.: 770-1762
h-distribution connector; 3-pole; Cod. B; 1 input; 2 outputs; outputs on one side; 3 locking levers; for flying leads; light green



Item No.: 770-1612
T-distribution connector; 3-pole; Cod. B; 1 input; 2 outputs; 2 locking levers; light green



Item No.: 770-1712
T-distribution connector; 3-pole; Cod. B; 1 input; 2 outputs; 3 locking levers; for flying leads; light green



1.1.3 Male connector/plug



| | | | |
|---|---|--|--|
| Item No.: 770-873/011-000 Plug for PCBs; angled; 3-pole; Cod. B; light green | Item No.: 770-873 Plug for PCBs; straight; 3-pole; Cod. B; light green | Item No.: 770-273 Plug; 3-pole; Cod. B; 4,00 mm²; light green | Item No.: 770-773 Snap-in plug; 3-pole; Cod. B; 4,00 mm²; light green |
|---|---|--|--|

1.2 Required Accessories

1.2.1 Locking system

1.2.1.1 Locking system



| | | | |
|---|---|---|---|
| Item No.: 770-101 Locking lever; for flying leads; for manual operation; black | Item No.: 770-121 Locking lever; for flying leads; for manual operation; white | Item No.: 770-111 Locking lever; for flying leads; for tool operation; black | Item No.: 770-131 Locking lever; for flying leads; for tool operation; white |
|---|---|---|---|

1.3 Optional Accessories

1.3.1 Cover

1.3.1.1 Cover



| | |
|---|---|
| Item No.: 770-201 Lockout cap; 12-pole, separable; for sockets; Plastic; black | Item No.: 770-221 Lockout cap; 12-pole, separable; for sockets; Plastic; white |
|---|---|

1.3.2 Installation

1.3.2.1 Mounting accessories



| | |
|---|---|
| Item No.: 770-318 Snap-in frame; 3-pole; 1.0 ... 3.0 mm; black | Item No.: 770-338 Snap-in frame; 3-pole; 1.0 ... 3.0 mm; white |
|---|---|

1.3.3 Marking

1.3.3.1 Marker



| | | | |
|---|---|---|--|
| Item No.: 770-450/000-006 Marker card; Plastic; blue | Item No.: 770-450/000-001 Marker card; Plastic; green | Item No.: 770-450/000-012 Marker card; Plastic; orange | Item No.: 770-450/000-005 Marker card; Plastic; red |
| Item No.: 770-450 Marker card; Plastic; white | Item No.: 770-450/000-002 Marker card; Plastic; yellow | | |

1.3.4 Strain relief

1.3.4.1 Strain relief housing



Item No.: 770-503/021-000
Strain relief housing; 3-pole; for 1 cable;
9.0 ... 13.0 mm; 71 mm; black



Item No.: 770-513/021-000
Strain relief housing; 3-pole; for 1 cable;
9.0 ... 13.0 mm; 71 mm; white



Item No.: 770-503/023-000
Strain relief housing; 3-pole; for 2 cables;
4.5 ... 8.0 mm; 55 mm; black



Item No.: 770-513/023-000
Strain relief housing; 3-pole; for 2 cables;
4.5 ... 8.0 mm; 55 mm; white



Item No.: 770-503
Strain relief housing; 3-pole; for 2 cables;
8.0 ... 11.5 mm; 55 mm; black



Item No.: 770-513
Strain relief housing; 3-pole; for 2 cables;
8.0 ... 11.5 mm; 55 mm; white



Item No.: 770-513/032-000
Strain relief housing; 3-pole; for 2 cables;
8.0 ... 11.5 mm; 55 mm; white



Item No.: 770-503/035-000
Strain relief housing; 3-pole; with locking
clip; for 1 cable; 7.0 ... 11.5 mm; 48 mm;
black



Item No.: 770-503/038-000
Strain relief housing; 3-pole; with locking
clip; for 1 cable; 7.0 ... 11.5 mm; 48 mm;
black



Item No.: 770-513/035-000
Strain relief housing; 3-pole; with locking
clip; for 1 cable; 7.0 ... 11.5 mm; 48 mm;
white



Item No.: 770-513/038-000
Strain relief housing; 3-pole; with locking
clip; for 1 cable; 7.0 ... 11.5 mm; 48 mm;
white



Item No.: 770-503/032-000
Strain relief housing; 3-pole; with locking
clip; for 2 cables; 8.0 ... 11.5 mm; 55 mm;
black

1.3.5 Tool

1.3.5.1 Operating tool



Item No.: 770-383
Operating tool; 3-way; green



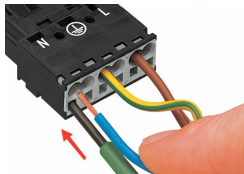
Item No.: 210-719
Operating tool; Blade: 2.5 x 0.4 mm; with a
partially insulated shaft

Installation Notes

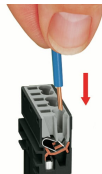
Conductor termination



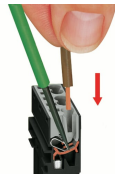
1. Strip length, outer insulation = 35 mm (2-pole), 55 mm (3- to 5-pole)
2. Strip length = 9 mm
3. Extended ground conductor = 8 mm



To terminate fine-stranded conductors, open the clamping unit via screwdriver (2.5 mm blade width) and insert a stripped conductor until it hits the backstop.

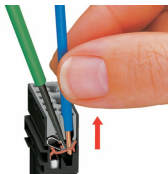


Insert the stripped solid conductor until it hits the backstop.



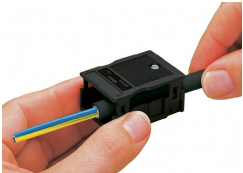
To terminate fine-stranded conductors, open the clamping unit via screwdriver (2.5 mm blade width) and insert a stripped conductor until it hits the backstop.

Conductor removal



To remove the conductor, actuate the clamp via screwdriver (2.5 mm blade width) and pull out the conductor.

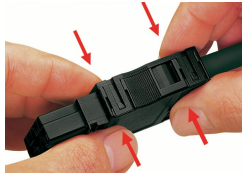
Installation



We recommend pulling the pre-latched strain relief housing over the cable prior to termination. However, the strain relief can be mounted at a later time as well.



Latch the strain relief housing onto the plug/socket. Note the "TOP" inscription.



Prepare strain relief housing by snapping together upper and bottom part.

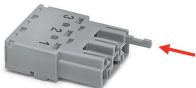


Tighten strain relief screw with screwdriver (2.5 mm blade width).

Coding

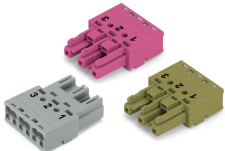


Simply cut off the coding pin from the socket.



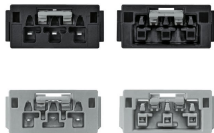
Insert coding pin into plug (break first) until it engages.

Mismatching protection



B-coded connectors with different colors can be plugged together.

Important note:
Different colors and/or pole markings are used for circuit identification.
Only connectors of the same color and same pole marking must be plugged together.



B-coded connectors (shown in gray) not only differ in color, but also in their design, making them incompatible with other coded connectors.



Easy circuit identification via different marking and colors