



Color: ■ gray

Electrical data

Ratings per IEC/EN	
Rated current	32 A

Physical data

Width	8 mm / 0.315 inches
Height	13 mm / 0.512 inches
Jumper assignment	1-2

Material data

Note (material data)	Information on material specifications can be found here
Color	gray
Material group	I
Insulation material	Polyamide (PA66)
Flammability class per UL94	V0
Fire load	0.035 MJ
Weight	4.9 g

Commercial data

Product Group	1 (Rail Mounted Terminal Blocks)
eCl@ss 10.0	27-14-11-40
eCl@ss 9.0	27-14-11-40
ETIM 8.0	EC000489
ETIM 7.0	EC000489
PU (SPU)	50 (25) pcs
Packaging type	Box
Country of origin	DE
GTIN	4044918398589
Customs tariff number	85366990990

Environmental Product Compliance	
RoHS Compliance Status	Compliant, No Exemption

Downloads

Environmental Product Compliance

Compliance Search	
Environmental Product Compliance 283-414	↓

Documentation

Bid Text			
283-414	19.02.2019	xml 2.55 KB	↓
283-414	12.06.2017	doc 23.00 KB	↓

CAD/CAE-Data

CAD data	
2D/3D Models 283-414	↓

CAE data	
WSCAD Universe 283-414	↓
ZUKEN Portal 283-414	↓

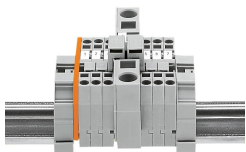
Installation Notes

Commoning

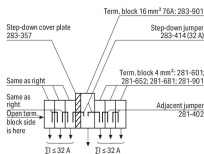


Commoning terminal blocks of different sizes – step down.
Push down the step-down jumper until fully inserted!

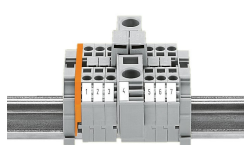
Commoning



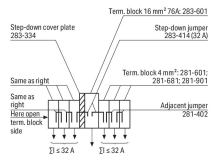
Commoning from 16 mm²/6 AWG (283 Series) to 4 mm²/12 AWG (281 Series) rail-mount terminal blocks via step-down jumpers.



Assembly example: Commoning from 16 mm²/6 AWG to 4 mm²/12 AWG rail-mount terminal blocks via step-down jumper (283-414).

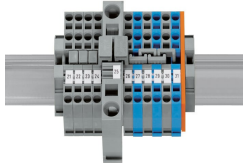
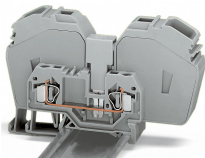
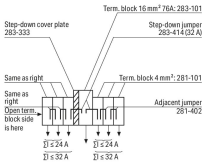
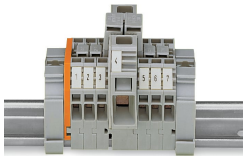


Commoning from 16 mm²/6 AWG (283 Series) to 4 mm²/12 AWG (281 Series) rail-mount terminal blocks via step-down jumpers.



Assembly example: Commoning from 16 mm²/6 AWG to 4 mm²/12 AWG rail-mount terminal blocks via step-down jumper (283-414).

Commoning

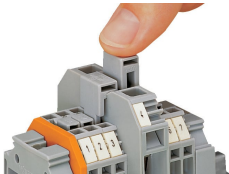


Commoning from 16 mm²/6 AWG (283 Series) to 4 mm²/12 AWG (281 Series) rail-mount terminal blocks via step-down jumpers.

Assembly example: Commoning from 16 mm²/6 AWG to 4 mm²/12 AWG rail-mount terminal blocks via step-down jumper (283-414).

Commoning with step-down jumper (283-414) from 285 Series (35 mm²/2 AWG) to 281 Series terminal blocks (4 mm²/12 AWG).

Commoning from 16 mm²/6 AWG (283 Series) to 4 mm²/12 AWG (281 Series) rail-mount terminal blocks via step-down jumpers.



Commoning side-entry rail-mount terminal blocks via step-down jumpers. Push down the step-down jumper until fully inserted.