



Color: ■ gray Similar to illustration

Physical data	
Width	20 mm / 0.787 inches
Height	4 mm / 0.157 inches
Jumper assignment	1-2-3-4

Material data	
Note (material data)	Information on material specifications can be found here
Color	gray
Fire load	0.012 MJ
Weight	1.9 g

Commercial data	
eCl@ss 10.0	27-14-11-40
eCl@ss 9.0	27-14-11-40
ETIM 8.0	EC000489
ETIM 7.0	EC000489
PU (SPU)	200 (25) pcs
Packaging type	Box
Country of origin	DE
GTIN	4044918977104
Customs tariff number	85366990990

Environmental Product Compliance	
RoHS Compliance Status	Compliant, No Exemption



Downloads

Environmental Product Compliance

Compliance Search			
Environmental Product Compliance 280-484			

Documentation

Bid Text			
280-484	19.02.2019	xml 2.54 KB	
280-484	27.04.2017	doc 24.00 KB	

CAD/CAE-Data

CAD data			
2D/3D Models 280-484			

CAE data	
EPLAN Data Portal 280-484	
WSCAD Universe 280-484	
ZUKEN Portal 280-484	

1 Compatible Products

1.1 Optional Accessories

1.1.1 Tool

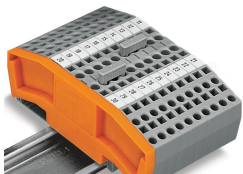
1.1.1.1 Operating tool



Item No.: 280-434
Operating tool; made of insulating material; 4-way

Installation Notes

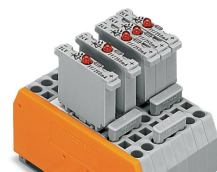
Commoning



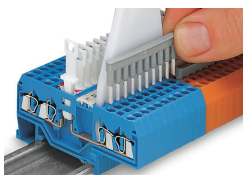
Commoning using comb-style jumper bars.
Push comb-style jumper bars down until fully inserted.

Commoning

4-conductor through terminal blocks,
angled type,
formation of groups with 3-way, comb-style
jumper bars

Commoning

Carrier terminal blocks with component
plugs,
alternate comb-style jumper bars,
3-way comb-style jumper bar

Commoning

Commoning front-entry disconnect terminal
blocks via comb-style jumper bar
using a 10-pole operating tool