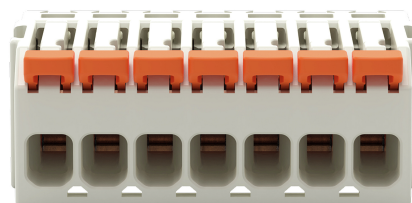
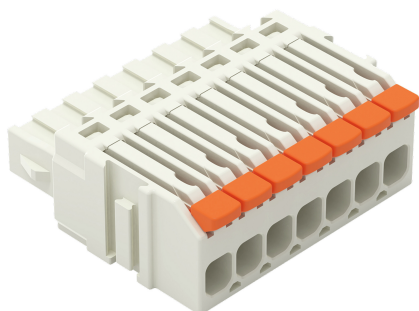


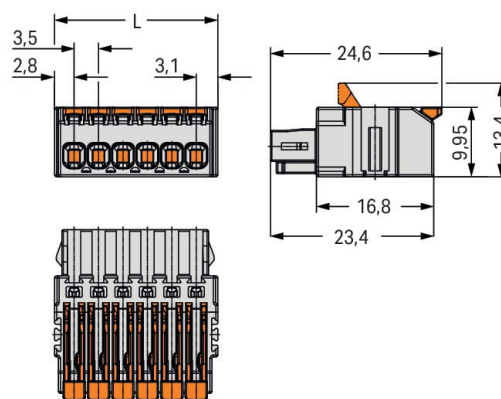
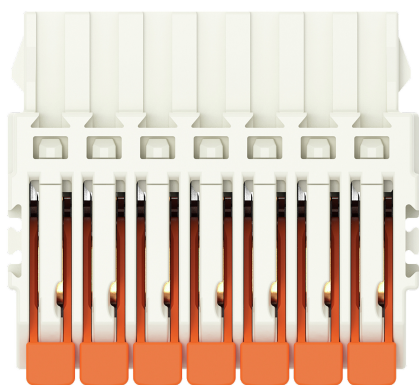
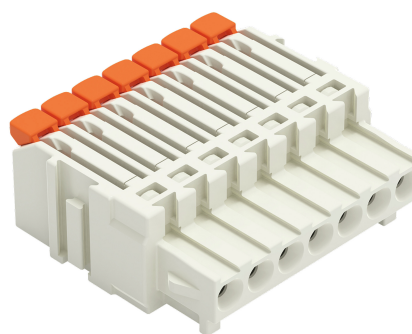
Data Sheet | Item Number: 2734-1107/327-000

1-conductor female connector; lever; Push-in CAGE CLAMP®; 1.5 mm²; Pin spacing 3.5 mm; 7-pole; 100% protected against mismatching; 1,50 mm²; light gray

<https://www.wago.com/2734-1107/327-000>



Color: ■ light gray



Dimensions in mm

$L = (\text{pole no.} \times \text{pin spacing}) + 2.4 \text{ mm}$

- Intuitive and tool-free lever actuation
- Universal connection for all conductor types
- Push-in termination of solid and ferruled conductors
- Test slot 90° to conductor entry
- 100% protected against mismatching
- Coding option available

Notes	
Safety information	The MCS – MULTI CONNECTION SYSTEM includes connectors without breaking capacity in accordance with DIN EN 61984. When used as intended, these connectors must not be connected/disconnected when live or under load. When used as intended, these connectors must not be connected/disconnected when live or under load. The circuit design should ensure header pins, which can be touched, are not live when unmated.
Variants:	Other pole numbers Other versions (or variants) can be requested from WAGO Sales or configured at https://configurator.wago.com/ .

Electrical data				
Ratings per		IEC/EN 60664-1		
Overvoltage category		III	III	II
Pollution degree		3	2	2
Nominal voltage		160 V	160 V	320 V
Rated surge voltage		2.5 kV	2.5 kV	2.5 kV
Rated current		10 A	10 A	10 A
Approvals per		UL 1059		
Use group		B	C	D
Rated voltage		300 V	-	300 V
Rated current		10 A	-	10 A
Approvals per		CSA		
Use group		B	C	D
Rated voltage		300 V	-	300 V
Rated current		10 A	-	10 A

Connection data																						
Connection points	7	<div>Connection 1</div> <table><tr><td>Connection technology</td><td>Push-in CAGE CLAMP®</td></tr><tr><td>Actuation type</td><td>Lever</td></tr><tr><td>Solid conductor</td><td>0.14 ... 1.5 mm² / 26 ... 14 AWG</td></tr><tr><td>Solid conductor; push-in termination</td><td>0.34 ... 1.5 mm² / 22 ... 14 AWG</td></tr><tr><td>Fine-stranded conductor</td><td>0.14 ... 1.5 mm² / 26 ... 14 AWG</td></tr><tr><td>Fine-stranded conductor; with insulated ferrule</td><td>0.14 ... 0.75 mm²</td></tr><tr><td>Fine-stranded conductor; with uninsulated ferrule</td><td>0.14 ... 1 mm²</td></tr><tr><td>Strip length</td><td>9 ... 10 mm / 0.35 ... 0.39 inches</td></tr><tr><td>Pole number</td><td>7</td></tr><tr><td>Conductor entry direction to mating direction</td><td>0°</td></tr></table>	Connection technology	Push-in CAGE CLAMP®	Actuation type	Lever	Solid conductor	0.14 ... 1.5 mm² / 26 ... 14 AWG	Solid conductor; push-in termination	0.34 ... 1.5 mm² / 22 ... 14 AWG	Fine-stranded conductor	0.14 ... 1.5 mm² / 26 ... 14 AWG	Fine-stranded conductor; with insulated ferrule	0.14 ... 0.75 mm²	Fine-stranded conductor; with uninsulated ferrule	0.14 ... 1 mm²	Strip length	9 ... 10 mm / 0.35 ... 0.39 inches	Pole number	7	Conductor entry direction to mating direction	0°
Connection technology	Push-in CAGE CLAMP®																					
Actuation type	Lever																					
Solid conductor	0.14 ... 1.5 mm² / 26 ... 14 AWG																					
Solid conductor; push-in termination	0.34 ... 1.5 mm² / 22 ... 14 AWG																					
Fine-stranded conductor	0.14 ... 1.5 mm² / 26 ... 14 AWG																					
Fine-stranded conductor; with insulated ferrule	0.14 ... 0.75 mm²																					
Fine-stranded conductor; with uninsulated ferrule	0.14 ... 1 mm²																					
Strip length	9 ... 10 mm / 0.35 ... 0.39 inches																					
Pole number	7																					
Conductor entry direction to mating direction	0°																					
Total number of potentials	7																					
Number of connection types	1																					
Number of levels	1																					

Physical data	
Pin spacing	3.5 mm / 0.138 inches
Width	26.9 mm / 1.059 inches
Height	9.95 mm / 0.392 inches
Depth	24.6 mm / 0.969 inches



Mechanical data		
Variable coding		Yes
Anti-rotation protection		Yes

Plug-in connection		
Contact type (pluggable connector)		Female connector/socket
Connector (connection type)		for conductor
Mismating protection		Yes

Material data		
Note (material data)		Information on material specifications can be found here
Color		light gray
Material group		I
Insulation material		Polyamide (PA66)
Flammability class per UL94		V0
Clamping spring material		Chrome-nickel spring steel (CrNi)
Contact material		Copper alloy
Contact plating		Tin
Fire load		0.093 MJ
Weight		5.8 g

Environmental requirements		
Limit temperature range		-60 ... +100 °C
Processing temperature		-35 ... +60 °C

Commercial data		
ETIM 8.0		EC002638
Country of origin		PT
GTIN		4066966216110
Customs tariff number		85366990990

Environmental Product Compliance		
RoHS Compliance Status		Compliant, No Exemption

Approvals / Certificates

General approvals



Approval	Standard	Certificate Name
CSA DEKRA Certification B.V.	C22.2 No. 158	2314554
UL Underwriters Laboratories Inc.	UL 1059	E45172
UL Underwriters Laboratories Inc.	UL 1977	E 45171

Downloads

Environmental Product Compliance

Compliance Search

Environmental Product Compliance

2734-1107/327-000

↓

Documentation

Additional Information

Technical Section

03.04.2019

pdf

2027.26 KB

↓

CAD/CAE-Data

CAD data

2D/3D Models

2734-1107/327-000

↓

PCB Design

Symbol and Footprint via SamacSys

2734-1107/327-000

↓

Symbol and Footprint via Ultra Librarian

2734-1107/327-000

↓

1 Compatible Products

1.1 System counterpart

1.1.1 Male connector/plug

[Item No.: 734-307](#)
1-conductor male connector; CAGE CLAMP®; 1.5 mm²; Pin spacing 3.5 mm; 7-pole; 100% protected against mismatching; 1,50 mm²; light gray

[Item No.: 734-167](#)
THT male header; 1.0 x 1.0 mm solder pin; angled; 100% protected against mismatching; Pin spacing 3.5 mm; 7-pole; light gray

[Item No.: 734-137](#)
THT male header; 1.0 x 1.0 mm solder pin; straight; 100% protected against mismatching; Pin spacing 3.5 mm; 7-pole; light gray

1.2 Optional Accessories

1.2.1 Coding

1.2.1.1 Coding

[Item No.: 2734-505](#)
Coding pin carrier; 5 coding keys; for female connectors; orange



1.2.2 Ferrule

1.2.2.1 Ferrule



Item No.: 216-301
Ferrule; Sleeve for 0.25 mm² / AWG 24; insulated; electro-tin plated; yellow



Item No.: 216-321
Ferrule; Sleeve for 0.25 mm² / AWG 24; insulated; electro-tin plated; yellow



Item No.: 216-151
Ferrule; Sleeve for 0.25 mm² / AWG 24; uninsulated; electro-tin plated



Item No.: 216-131
Ferrule; Sleeve for 0.25 mm² / AWG 24; uninsulated; electro-tin plated; silver-colored



Item No.: 216-302
Ferrule; Sleeve for 0.34 mm² / 22 AWG; insulated; electro-tin plated; light turquoise



Item No.: 216-322
Ferrule; Sleeve for 0.34 mm² / 22 AWG; insulated; electro-tin plated; light turquoise



Item No.: 216-132
Ferrule; Sleeve for 0.34 mm² / AWG 24; uninsulated; electro-tin plated



Item No.: 216-152
Ferrule; Sleeve for 0.34 mm² / AWG 24; uninsulated; electro-tin plated



Item No.: 216-241
Ferrule; Sleeve for 0.5 mm² / 20 AWG; insulated; electro-tin plated; electrolytic copper; gastight crimped; acc. to DIN 46228, Part 4/09.90; white



Item No.: 216-201
Ferrule; Sleeve for 0.5 mm² / 20 AWG; insulated; electro-tin plated; white



Item No.: 216-221
Ferrule; Sleeve for 0.5 mm² / 20 AWG; insulated; electro-tin plated; white



Item No.: 216-141
Ferrule; Sleeve for 0.5 mm² / 20 AWG; uninsulated; electro-tin plated; electrolytic copper; gastight crimped; acc. to DIN 46228, Part 1/08.92



Item No.: 216-101
Ferrule; Sleeve for 0.5 mm² / AWG 22; uninsulated; electro-tin plated; silver-colored



Item No.: 216-121
Ferrule; Sleeve for 0.5 mm² / AWG 22; uninsulated; electro-tin plated; silver-colored



Item No.: 216-242
Ferrule; Sleeve for 0.75 mm² / 18 AWG; insulated; electro-tin plated; electrolytic copper; gastight crimped; acc. to DIN 46228, Part 4/09.90; gray



Item No.: 216-262
Ferrule; Sleeve for 0.75 mm² / 18 AWG; insulated; electro-tin plated; electrolytic copper; gastight crimped; acc. to DIN 46228, Part 4/09.90; gray



Item No.: 216-202
Ferrule; Sleeve for 0.75 mm² / 18 AWG; insulated; electro-tin plated; gray



Item No.: 216-222
Ferrule; Sleeve for 0.75 mm² / 18 AWG; insulated; electro-tin plated; gray



Item No.: 216-142
Ferrule; Sleeve for 0.75 mm² / 18 AWG; uninsulated; electro-tin plated; electrolytic copper; gastight crimped; acc. to DIN 46228, Part 1/08.92



Item No.: 216-102
Ferrule; Sleeve for 0.75 mm² / AWG 20; uninsulated; electro-tin plated; silver-colored



Item No.: 216-122
Ferrule; Sleeve for 0.75 mm² / AWG 20; uninsulated; electro-tin plated; silver-colored

1.2.3 Jumper

1.2.3.1 Jumper



Item No.: 2734-402
Jumper; for conductor entry; 2-way; insulated; light gray

1.2.4 Locking system

1.2.4.1 Locking system



Item No.: 2734-516
center locking; for female connectors; For Push-in CAGE CLAMP® connection; lever; Pin spacing 3.5 mm; 4-pole; orange

Item No.: 2734-510
Locking lever; for female connectors; 1 part; For Push-in CAGE CLAMP® connection; lever; orange

1.2.5 Strain relief

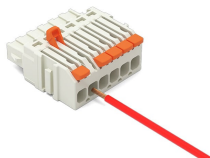
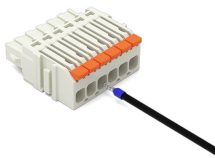
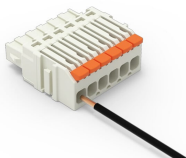
1.2.5.1 Strain relief plate



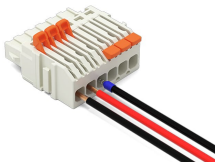
Item No.: 2734-534
Strain relief plate; for female connectors;
13 mm wide; 1 part; lever; Pin spacing 3.5
mm; light gray

Installation Notes

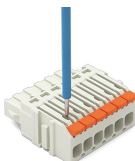
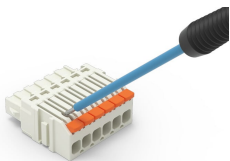
Conductor termination



Conductor removal



Testing



Marking

