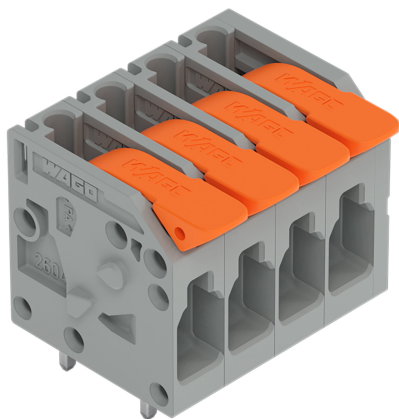


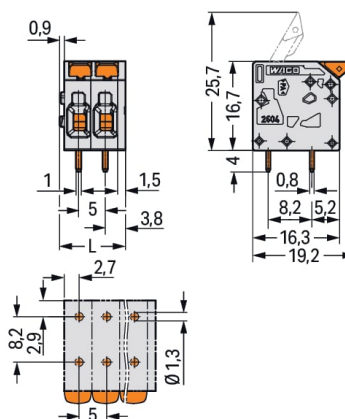
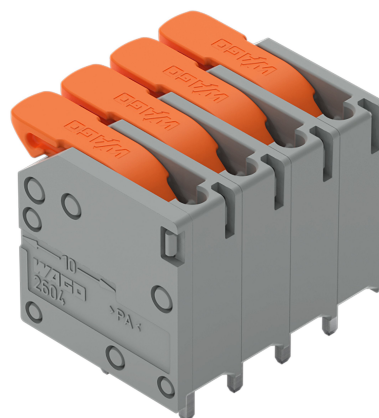
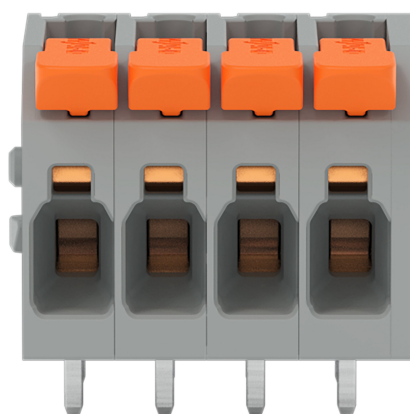
Data Sheet | Item Number: 2604-1104

PCB terminal block; lever; 4 mm²; Pin spacing 5 mm; 4-pole; Push-in CAGE CLAMP®; 4,00 mm²; gray

<https://www.wago.com/2604-1104>

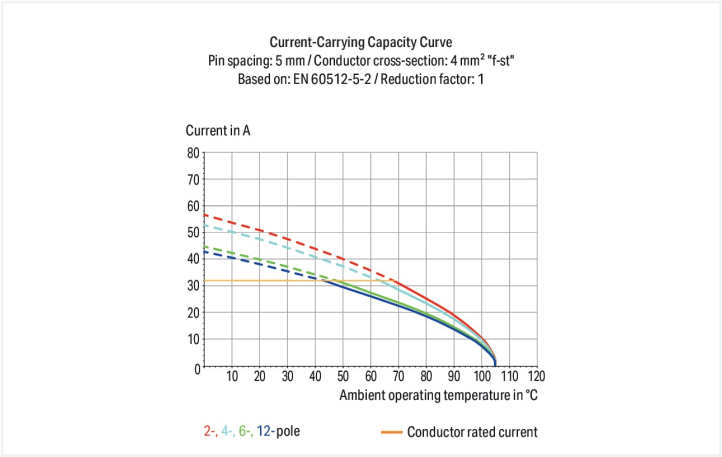


Color: ■ gray



Dimensions in mm

$L = (\text{pole no.} - 1) \times \text{pin spacing} + 7.4 \text{ mm}$





- PCB terminal blocks with Push-in CAGE CLAMP® connection and levers
- Push-in termination of solid and ferruled conductors
- Intuitive and tool-free operation
- Several clamping units can be held open simultaneously, simplifying the connection of multi-core cables
- Testing can be performed both parallel and perpendicular to conductor entry

Notes	
Variants:	Other colors Other versions (or variants) can be requested from WAGO Sales or configured at https://configurator.wago.com/ . Other pole numbers Direct marking



Electrical data				
Ratings per		IEC/EN 60664-1		
Overvoltage category	III	III	II	
Pollution degree	3	2	2	
Nominal voltage	320 V	400 V	630 V	
Rated surge voltage	4 kV	4 kV	4 kV	
Rated current	32 A	32 A	32 A	
Approvals per		CSA		
Use group	B	C	D	
Rated voltage	300 V	-	300 V	
Rated current	20 A	-	5 A	

Approvals per				UL 1059	
Use group	B		C	D	
Rated voltage	300 V		-	300 V	
Rated current	20 A		-	10 A	

Connection data				
Connection points	4	Connection 1		
Total number of potentials	4	Connection technology	Push-in CAGE CLAMP®	
Number of connection types	1	Actuation type	Lever	
Number of levels	1	Solid conductor	0.2 ... 4 mm² / 24 ... 12 AWG	
		Fine-stranded conductor	0.2 ... 4 mm² / 24 ... 12 AWG	
		Fine-stranded conductor; with insulated ferrule	0.25 ... 2.5 mm²	
		Fine-stranded conductor; with uninsulated ferrule	0.25 ... 2.5 mm²	
		Fine-stranded conductor; with twin ferrule	0.25 ... 1.5 mm²	
		Strip length	9 ... 11 mm / 0.35 ... 0.43 inches	
		Conductor connection direction to PCB	0°	
		Pole number	4	
Physical data				
Pin spacing	5 mm / 0.197 inches			
Width	22.4 mm / 0.882 inches			
Height	20.7 mm / 0.815 inches			
Height from the surface	16.7 mm / 0.657 inches			
Depth	19.2 mm / 0.756 inches			
Solder pin length	4 mm			
Solder pin dimensions	0.8 x 1 mm			
Drilled hole diameter with tolerance	1.3 ^(+0.1) mm			
PCB contact				
PCB contact	THT			
Solder pin arrangement	over the entire terminal strip (in-line)			
Number of solder pins per potential	2			



Material data	
Note (material data)	Information on material specifications can be found here
Color	gray
Material group	I
Insulation material	Polyamide (PA66)
Flammability class per UL94	V0
Clamping spring material	Chrome-nickel spring steel (CrNi)
Contact material	Electrolytic copper (E _{Cu})
Contact plating	Tin
Fire load	0.156 MJ
Actuator color	orange
Weight	6.2 g

Environmental requirements	
Limit temperature range	-60 ... +105 °C
Processing temperature	-35 ... +60 °C
Continuous operating temperature	-60 ... +105 °C

Commercial data	
eCl@ss 10.0	27-44-04-01
eCl@ss 9.0	27-44-04-01
ETIM 8.0	EC002643
ETIM 7.0	EC002643
PU (SPU)	90 pcs
Packaging type	Box
Country of origin	PL
GTIN	4066966389753
Customs tariff number	85369010000

Environmental Product Compliance	
RoHS Compliance Status	Compliant, No Exemption

Approvals / Certificates

General approvals



Approval	Standard	Certificate Name
CB DEKRA Certification B.V.	IEC 60947-7-4	NL-61583
CSA DEKRA Certification B.V.	C22.2 No. 158	70117145
cURus Underwriters Laboratories Inc.	UL 1059	E45172
KEMA/KEUR DEKRA Certification B.V.	EN 60947-7-4	71-100535



Downloads

Environmental Product Compliance

Compliance Search

Environmental Product Compliance 2604-1104

Download icon

Documentation

Additional Information

Technical Section

03.04.2019

pdf

2027.26 KB

Download icon

CAD/CAE-Data

CAD data

2D/3D Models 2604-1104

Download icon

CAE data

ZUKEN Portal 2604-1104

Download icon

PCB Design

Symbol and Footprint via SamacSys 2604-1104

Download icon

Symbol and Footprint via Ultra Librarian 2604-1104


Download icon

1 Compatible Products


1.1 Optional Accessories

1.1.1 Ferrule


1.1.1.1 Ferrule




Item No.: 216-241
Ferrule; Sleeve for 0.5 mm² / 20 AWG; insulated; electro-tin plated; electrolytic copper; gastight crimped; acc. to DIN 46228, Part 4/09.90; white




Item No.: 216-242
Ferrule; Sleeve for 0.75 mm² / 18 AWG; insulated; electro-tin plated; electrolytic copper; gastight crimped; acc. to DIN 46228, Part 4/09.90; gray




Item No.: 216-243
Ferrule; Sleeve for 1 mm² / AWG 18; insulated; electro-tin plated; electrolytic copper; gastight crimped; acc. to DIN 46228, Part 4/09.90; red



Item No.: 216-244
Ferrule; Sleeve for 1.5 mm² / AWG 16; insulated; electro-tin plated; electrolytic copper; gastight crimped; acc. to DIN 46228, Part 4/09.90; black



Item No.: 216-246
Ferrule; Sleeve for 2.5 mm² / AWG 14; insulated; electro-tin plated; electrolytic copper; gastight crimped; acc. to DIN 46228, Part 4/09.90; blue



Item No.: 216-106
Ferrule; Sleeve for 2.5 mm² / AWG 14; un-insulated; electro-tin plated; silver-colored

Installation Notes

Conductor termination



Insert fine-stranded conductors – and remove all conductors – via operating tool.

Conductor termination



Insert solid conductors via push-in termination.