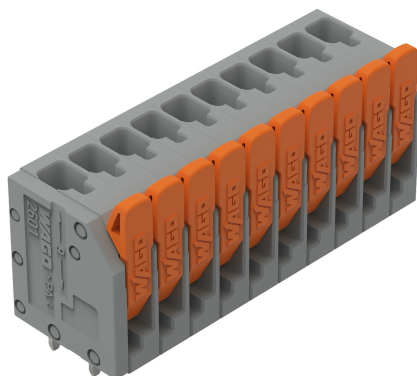


Data Sheet | Item Number: 2601-3110

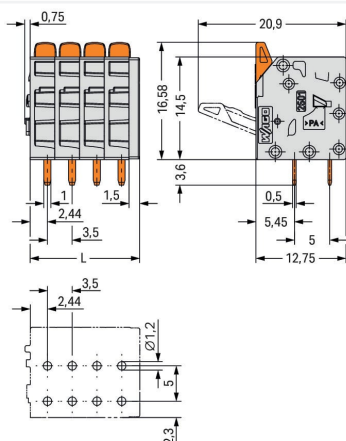
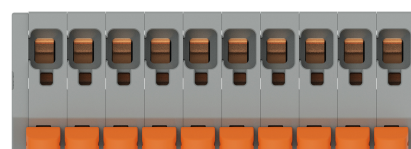
PCB terminal block; lever; 1.5 mm²; Pin spacing 3.5 mm; 10-pole; Push-in CAGE

CLAMP®; 1,50 mm²; gray

<https://www.wago.com/2601-3110>



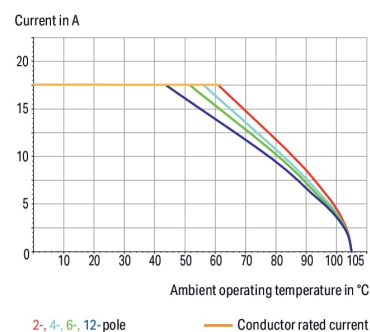
Color: ■ gray



Dimensions in mm

$L = (\text{pole no.} - 1) \times \text{pin spacing} + 5 \text{ mm}$

Current-Carrying Capacity Curve
Pin spacing: 3,5 mm / Conductor cross-section: 1,5 mm² „f-st“
Based on: EN 60512-5-2 / Reduction factor: 1



- PCB terminal blocks with Push-in CAGE CLAMP® connection and levers
- Push-in termination of solid and ferruled conductors
- Intuitive and tool-free operation
- Several clamping units can be held open simultaneously, simplifying the connection of multi-core cables
- Testing can be performed both parallel and perpendicular to conductor entry



Notes	
Variants:	Other colors Other versions (or variants) can be requested from WAGO Sales or configured at https://configurator.wago.com/ . Other pole numbers Direct marking

Electrical data				
Ratings per		IEC/EN 60664-1		
Overvoltage category		III	III	II
Pollution degree		3	2	2
Nominal voltage		160 V	160 V	320 V
Rated surge voltage		2.5 kV	2.5 kV	2.5 kV
Rated current		17.5 A	17.5 A	17.5 A
Approvals per		UL 1059		
Use group		B	C	D
Rated voltage		300 V	-	300 V
Rated current		10 A	-	10 A
Approvals per		CSA		
Use group		B	C	D
Rated voltage		300 V	-	300 V
Rated current		10 A	-	10 A

Connection data																								
Connection points	10	<div>Connection 1</div> <table><tr><td>Connection technology</td><td>Push-in CAGE CLAMP®</td></tr><tr><td>Actuation type</td><td>Lever</td></tr><tr><td>Solid conductor</td><td>0.14 ... 1.5 mm² / 26 ... 14 AWG</td></tr><tr><td>Solid conductor; push-in termination</td><td>0.5 ... 1.5 mm² / 26 ... 14 AWG</td></tr><tr><td>Fine-stranded conductor</td><td>0.2 ... 1.5 mm² / 26 ... 14 AWG</td></tr><tr><td>Fine-stranded conductor; with insulated ferrule</td><td>0.25 ... 0.75 mm²</td></tr><tr><td>Fine-stranded conductor; with uninsulated ferrule</td><td>0.25 ... 1.5 mm²</td></tr><tr><td>Note (conductor cross-section)</td><td>For conductors (26 AWG) that are not rigid enough, the clamping unit must be opened using a lever.</td></tr><tr><td>Strip length</td><td>8 ... 9 mm / 0.31 ... 0.35 inches</td></tr><tr><td>Conductor connection direction to PCB</td><td>90 °</td></tr><tr><td>Pole number</td><td>10</td></tr></table>	Connection technology	Push-in CAGE CLAMP®	Actuation type	Lever	Solid conductor	0.14 ... 1.5 mm² / 26 ... 14 AWG	Solid conductor; push-in termination	0.5 ... 1.5 mm² / 26 ... 14 AWG	Fine-stranded conductor	0.2 ... 1.5 mm² / 26 ... 14 AWG	Fine-stranded conductor; with insulated ferrule	0.25 ... 0.75 mm²	Fine-stranded conductor; with uninsulated ferrule	0.25 ... 1.5 mm²	Note (conductor cross-section)	For conductors (26 AWG) that are not rigid enough, the clamping unit must be opened using a lever.	Strip length	8 ... 9 mm / 0.31 ... 0.35 inches	Conductor connection direction to PCB	90 °	Pole number	10
Connection technology	Push-in CAGE CLAMP®																							
Actuation type	Lever																							
Solid conductor	0.14 ... 1.5 mm² / 26 ... 14 AWG																							
Solid conductor; push-in termination	0.5 ... 1.5 mm² / 26 ... 14 AWG																							
Fine-stranded conductor	0.2 ... 1.5 mm² / 26 ... 14 AWG																							
Fine-stranded conductor; with insulated ferrule	0.25 ... 0.75 mm²																							
Fine-stranded conductor; with uninsulated ferrule	0.25 ... 1.5 mm²																							
Note (conductor cross-section)	For conductors (26 AWG) that are not rigid enough, the clamping unit must be opened using a lever.																							
Strip length	8 ... 9 mm / 0.31 ... 0.35 inches																							
Conductor connection direction to PCB	90 °																							
Pole number	10																							
Total number of potentials	10																							
Number of connection types	1																							
Number of levels	1																							

Physical data	
Pin spacing	3.5 mm / 0.138 inches
Width	36.5 mm / 1.437 inches
Height	20.2 mm / 0.794 inches
Height from the surface	16.6 mm / 0.653 inches
Depth	12.8 mm / 0.502 inches
Solder pin length	3.6 mm
Solder pin dimensions	1 x 0.5 mm
Drilled hole diameter with tolerance	1.2 (+0.1) mm



PCB contact		
PCB contact		THT
Solder pin arrangement		over the entire terminal strip (in-line)
Number of solder pins per potential		2

Material data		
Note (material data)		Information on material specifications can be found here
Color		gray
Material group		I
Insulation material		Polyamide (PA66)
Flammability class per UL94		V0
Clamping spring material		Chrome-nickel spring steel (CrNi)
Contact material		Electrolytic copper (E _{Cu})
Contact plating		Tin
Fire load		0.147 MJ
Actuator color		orange
Weight		7.8 g

Environmental requirements		
Limit temperature range		-60 ... +105 °C
Processing temperature		-35 ... +60 °C
Continuous operating temperature		-60 ... +105 °C

Commercial data		
ETIM 8.0		EC002643
PU (SPU)		50 pcs
Country of origin		PL
GTIN		4066966243215
Customs tariff number		85369010000

Environmental Product Compliance		
RoHS Compliance Status		Compliant, No Exemption

Approvals / Certificates

General approvals



Approval	Standard	Certificate Name
CB DEKRA Certification B.V.	IEC 60947-7-4	NL-86025
CSA CSA Group	C22.2	80120532
KEMA/KEUR DEKRA Certification B.V.	EN 60947-7-4	71-127124
UL Underwriters Laboratories Inc.	UL 1059	E45172



Downloads			
Environmental Product Compliance			
Compliance Search			
Environmental Product Compliance 2601-3110			

Documentation			
Additional Information			
Technical Section	03.04.2019	pdf 2027.26 KB	

CAD/CAE-Data			
CAD data		PCB Design	
2D/3D Models 2601-3110		Symbol and Footprint via SamacSys 2601-3110	
		Symbol and Footprint via Ultra Librarian 2601-3110	