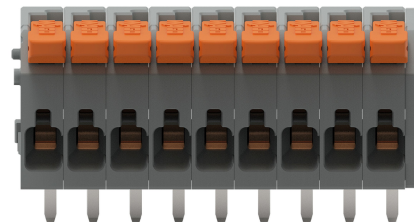
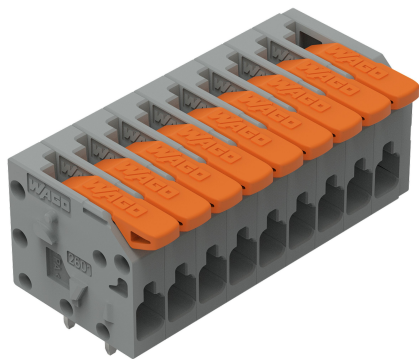
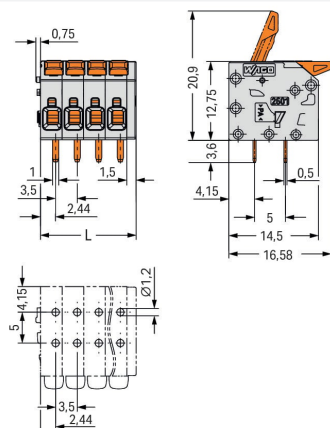
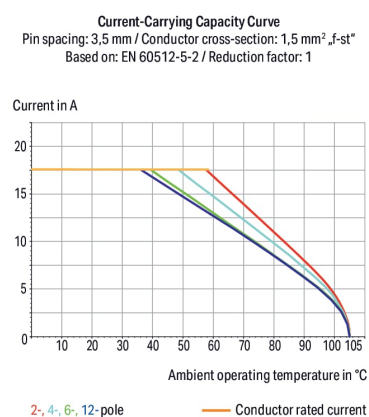


**Data Sheet | Item Number: 2601-1109**  
PCB terminal block; lever; 1.5 mm<sup>2</sup>; Pin spacing 3.5 mm; 9-pole; Push-in CAGE CLAMP®; 1,50 mm<sup>2</sup>; gray

CLAMP®; 1,50 mm²; gray



A close-up photograph of a WAGO 2601 terminal block. The block is grey with an orange protective cover on top. The WAGO logo and the model number 2601 are visible on the front. Two wires are inserted into the terminals at the bottom.


$$L = (\text{pole no.} - 1) \times \text{pin spacing} + 5 \text{ mm}$$


- Continued on next page



Notes	
Variants:	Other colors Other versions (or variants) can be requested from WAGO Sales or configured at <a href="https://configurator.wago.com/">https://configurator.wago.com/</a> . Other pole numbers Direct marking

Electrical data				
Ratings per		IEC/EN 60664-1		
Overvoltage category		III	III	II
Pollution degree		3	2	2
Nominal voltage		160 V	160 V	320 V
Rated surge voltage		2.5 kV	2.5 kV	2.5 kV
Rated current		17.5 A	17.5 A	17.5 A
Approvals per		UL 1059		
Use group		B	C	D
Rated voltage		300 V	-	300 V
Rated current		10 A	-	10 A
Approvals per		CSA		
Use group		B	C	D
Rated voltage		300 V	-	300 V
Rated current		10 A	-	10 A

Connection data																								
Connection points	9	<div>Connection 1</div> <table><tr><td>Connection technology</td><td>Push-in CAGE CLAMP®</td></tr><tr><td>Actuation type</td><td>Lever</td></tr><tr><td>Solid conductor</td><td>0.14 ... 1.5 mm² / 26 ... 14 AWG</td></tr><tr><td>Solid conductor; push-in termination</td><td>0.5 ... 1.5 mm² / 26 ... 14 AWG</td></tr><tr><td>Fine-stranded conductor</td><td>0.2 ... 1.5 mm² / 26 ... 14 AWG</td></tr><tr><td>Fine-stranded conductor; with insulated ferrule</td><td>0.25 ... 0.75 mm²</td></tr><tr><td>Fine-stranded conductor; with uninsulated ferrule</td><td>0.25 ... 1.5 mm²</td></tr><tr><td>Note (conductor cross-section)</td><td>For conductors (26 AWG) that are not rigid enough, the clamping unit must be opened using a lever.</td></tr><tr><td>Strip length</td><td>8 ... 9 mm / 0.31 ... 0.35 inches</td></tr><tr><td>Conductor connection direction to PCB</td><td>0 °</td></tr><tr><td>Pole number</td><td>9</td></tr></table>	Connection technology	Push-in CAGE CLAMP®	Actuation type	Lever	Solid conductor	0.14 ... 1.5 mm² / 26 ... 14 AWG	Solid conductor; push-in termination	0.5 ... 1.5 mm² / 26 ... 14 AWG	Fine-stranded conductor	0.2 ... 1.5 mm² / 26 ... 14 AWG	Fine-stranded conductor; with insulated ferrule	0.25 ... 0.75 mm²	Fine-stranded conductor; with uninsulated ferrule	0.25 ... 1.5 mm²	Note (conductor cross-section)	For conductors (26 AWG) that are not rigid enough, the clamping unit must be opened using a lever.	Strip length	8 ... 9 mm / 0.31 ... 0.35 inches	Conductor connection direction to PCB	0 °	Pole number	9
Connection technology	Push-in CAGE CLAMP®																							
Actuation type	Lever																							
Solid conductor	0.14 ... 1.5 mm² / 26 ... 14 AWG																							
Solid conductor; push-in termination	0.5 ... 1.5 mm² / 26 ... 14 AWG																							
Fine-stranded conductor	0.2 ... 1.5 mm² / 26 ... 14 AWG																							
Fine-stranded conductor; with insulated ferrule	0.25 ... 0.75 mm²																							
Fine-stranded conductor; with uninsulated ferrule	0.25 ... 1.5 mm²																							
Note (conductor cross-section)	For conductors (26 AWG) that are not rigid enough, the clamping unit must be opened using a lever.																							
Strip length	8 ... 9 mm / 0.31 ... 0.35 inches																							
Conductor connection direction to PCB	0 °																							
Pole number	9																							
Total number of potentials	9																							
Number of connection types	1																							
Number of levels	1																							

Physical data	
Pin spacing	3.5 mm / 0.138 inches
Width	33 mm / 1.299 inches
Height	16.35 mm / 0.644 inches
Height from the surface	12.75 mm / 0.502 inches
Depth	16.58 mm / 0.653 inches
Solder pin length	3.6 mm
Solder pin dimensions	1 x 0.5 mm
Drilled hole diameter with tolerance	1.2 (+0.1) mm



PCB contact		
PCB contact		THT
Solder pin arrangement		over the entire terminal strip (in-line)
Number of solder pins per potential		2

Material data		
Note (material data)		<a href="#">Information on material specifications can be found here</a>
Color		gray
Material group		I
Insulation material		Polyamide (PA66)
Flammability class per UL94		V0
Clamping spring material		Chrome-nickel spring steel (CrNi)
Contact material		Electrolytic copper (E <sub>Cu</sub> )
Contact plating		Tin
Fire load		0.133 MJ
Actuator color		orange
Weight		7 g

Environmental requirements		
Limit temperature range		-60 ... +105 °C
Processing temperature		-35 ... +60 °C
Continuous operating temperature		-60 ... +105 °C

Commercial data		
ETIM 8.0		EC002643
PU (SPU)		60 pcs
Country of origin		PL
GTIN		4066966242126
Customs tariff number		85369010000

Environmental Product Compliance		
RoHS Compliance Status		Compliant, No Exemption

Approvals / Certificates

General approvals



Approval	Standard	Certificate Name
CB DEKRA Certification B.V.	IEC 60947-7-4	NL-86025
CSA CSA Group	C22.2	80120532
KEMA/KEUR DEKRA Certification B.V.	EN 60947-7-4	71-127124
UL Underwriters Laboratories Inc.	UL 1059	E45172



Downloads			
Environmental Product Compliance			
Compliance Search			
Environmental Product Compliance 2601-1109			

Documentation			
Additional Information			
Technical Section	03.04.2019	pdf 2027.26 KB	

CAD/CAE-Data			
CAD data		PCB Design	
2D/3D Models 2601-1109		Symbol and Footprint via SamacSys 2601-1109	
		Symbol and Footprint via Ultra Librarian 2601-1109	