

Color: ■ blue

Electrical data

Ratings per IEC/EN	
Nominal voltage (III/3)	400 V
Rated current	41 A

Physical data

Jumper assignment	1-2
-------------------	-----

Material data

Note (material data)	<a href="#">Information on material specifications can be found here</a>
Color	blue
Insulation material	Polyamide (PA66)
Fire load	0 MJ
Weight of insulation material	0.45 g
Weight	2.9 g

Environmental requirements

Continuous operating temperature	-60 ... +105 °C
----------------------------------	-----------------


Commercial data

ETIM 8.0	EC000489
ETIM 7.0	EC000489
PU (SPU)	5 pcs
Country of origin	CN
GTIN	4055144068016
Customs tariff number	85366990990



Environmental Product Compliance	
RoHS Compliance Status	Compliant,No Exemption

Downloads


Environmental Product Compliance

Compliance Search	
Environmental Product Compliance 221-941/000-006	

Documentation

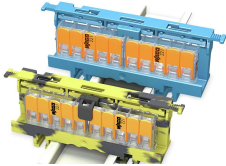
Bid Text		
221-941/000-006	xml 2.96 KB	
221-941/000-006	docx 27.51 KB	

CAD/CAE-Data

CAD data	
2D/3D Models 221-941/000-006	

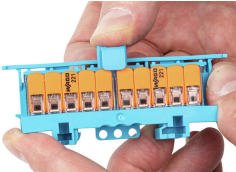
Installation Notes

Commoning



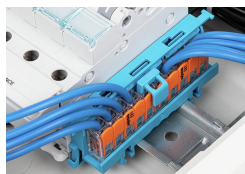
Extending the N and PE (ground) distribution via jumper

Commoning



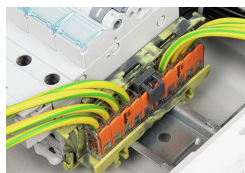
Insert the jumper with a locking function into closed clamping units.

## Commoning



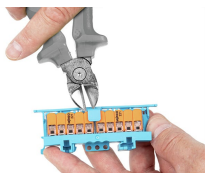
With a locking function:  
The lockable jumper is plugged into the splicing connectors.

## Commoning

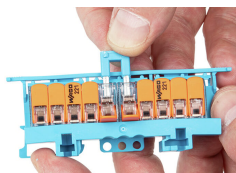


The lockable jumper is plugged into the splicing connectors.

## Commoning



Remove the locking mechanism for intentional jumper removal.



Remove the jumper from open clamping units.