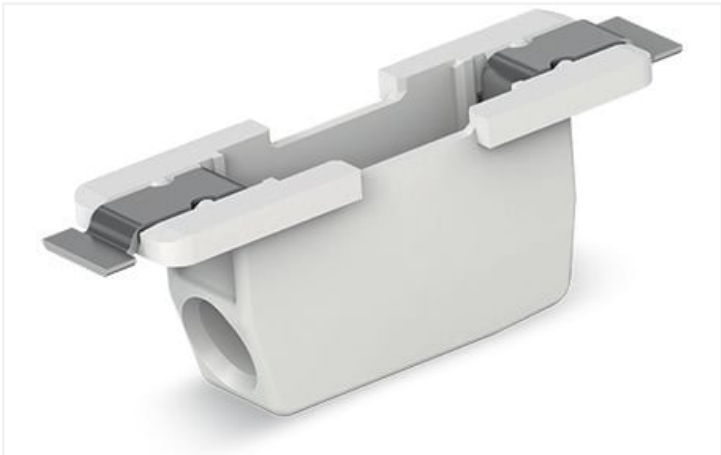
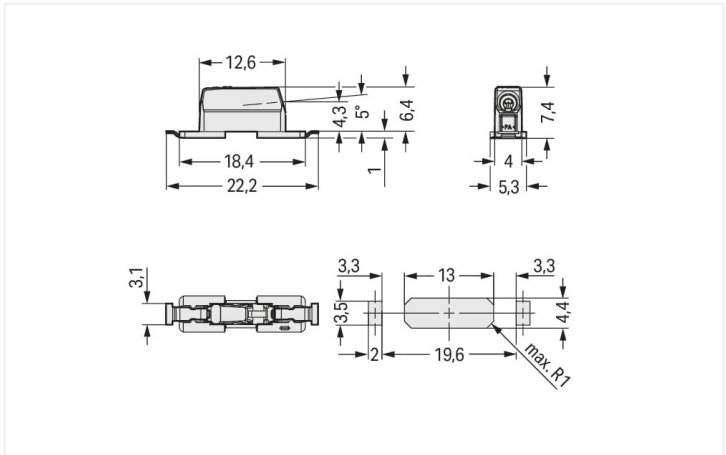


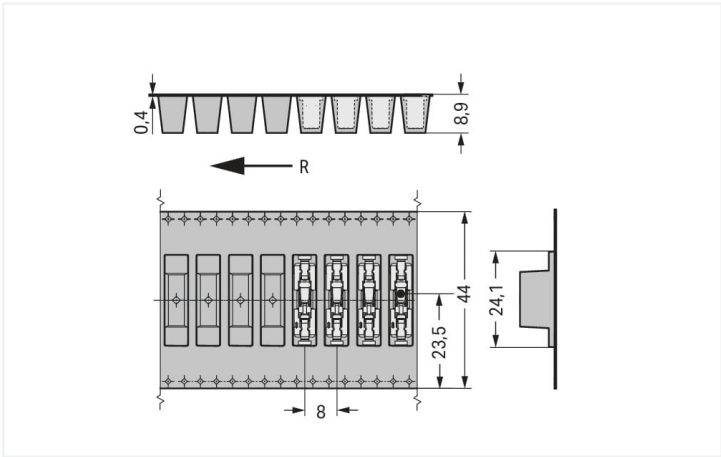
**Data Sheet | Item Number: 2070-451/998-406**  
Through-Board SMD PCB Terminal Block; 0.75 mm²; Pin spacing 6.5 mm; 1-pole;  
Push-in CAGE CLAMP®; in tape-and-reel packaging; 0,75 mm²; white  
<https://www.wago.com/2070-451/998-406>



Color:  white



Dimensions in mm



Dimensions in mm  
R = feed direction

- SMD PCB terminal block with Push-in CAGE CLAMP® for back-side wiring of LED modules
- Low profile of just 1.1 mm on the module's front side
- Push-in termination of solid conductors
- Insert fine-stranded conductors and remove all conductors via operating tool

Notes			
Note		Depending on reflow soldering temperatures and times, color deviations may occur. These deviations will have no impact on functionality.	
Variants:		Other versions (or variants) can be requested from WAGO Sales or configured at <a href="https://configurator.wago.com/">https://configurator.wago.com/</a> . Reel diameter of tape-and-reel packaging: 381 mm	

Electrical data			
Ratings		Electrical data for FR4 PCB type	
Ratings per		IEC/EN 60664-1	IEC/EN 60664-1
Overvoltage category		III	II
Pollution degree		3	2
Nominal voltage		320 V	630 V
Rated surge voltage		4 kV	4 kV
Rated current		9 A	9 A

Ratings		Electrical data for metal-core PCBs	
Ratings per		IEC/EN 60664-1	IEC/EN 60664-1
Overvoltage category		III	II
Pollution degree		3	2
Nominal voltage		200 V	500 V
Rated surge voltage		4 kV	4 kV



Ratings		Electrical data for metal-core PCBs		
Rated current		9 A	9 A	9 A

Ratings	
Approvals per	UL 1977
Rated voltage	600 V
Rated current	9 A

Connection data			
Connection points	1	Connection 1	
Total number of potentials	1	Connection technology	Push-in CAGE CLAMP®
Number of connection types	1	Actuation type	Operating tool
Number of levels	1	Solid conductor	0.2 ... 0.75 mm² / 24 ... 18 AWG
		Fine-stranded conductor	0.2 ... 0.75 mm² / 24 ... 18 AWG
		Strip length	8 ... 10 mm / 0.31 ... 0.39 inches
		Conductor connection direction to PCB	0 °
		Pole number	1

Physical data		
Pin spacing		6.5 mm / 0.256 inches
Width		5.3 mm / 0.209 inches
Height		7.45 mm / 0.293 inches
Depth		22.2 mm / 0.874 inches
Reel diameter of tape-and-reel packaging		330 mm
Tape width		44 mm
PCB thickness (max.)		2.4 mm

Mechanical data		
Design		without cover
Mounting type		Through-board

PCB contact		
PCB contact		SMD
Solder pin arrangement		over the entire terminal strip (in-line)
Number of solder pins per potential		2

Material data		
Note (material data)		<a href="#">Information on material specifications can be found here</a>
Color		white
Material group		I
Insulation material		Polyphthalamide (PPA GF)
Flammability class per UL94		V0
Contact material		Copper alloy
Contact plating		Tin
Fire load		0 MJ
Weight		0.5 g




Environmental requirements	
Limit temperature range	-60 ... +105 °C

Commercial data	
eCl@ss 10.0	27-14-11-06
eCl@ss 9.0	27-14-11-06
ETIM 8.0	EC001284
ETIM 7.0	EC001284
PU (SPU)	4770 (954) pcs
Packaging type	Box
Country of origin	CH
GTIN	4055143645188
Customs tariff number	85369010000

Environmental Product Compliance	
RoHS Compliance Status	Compliant, No Exemption

Approvals / Certificates		
General approvals		Declarations of conformity and manufacturer's declarations
 		
Approval	Standard	Certificate Name
CB DEKRA Certification B.V.	IEC 60998	NL-57652
CB DEKRA Certification B.V.	EN 60998	NL-57653
KEMA/KEUR DEKRA Certification B.V.	EN 60998	71-107967
KEMA/KEUR DEKRA Certification B.V.	EN 60947-7-4	71-107965
UR Underwriters Laboratories Inc.	UL 1977	E45171
		EU-Declaration of Confor- mity WAGO GmbH & Co. KG
		UK-Declaration of Confor- mity WAGO GmbH & Co. KG

Downloads	
Environmental Product Compliance	
Compliance Search	
Environmental Product Compliance 2070-451/998-406	



Documentation

Additional Information			
Technical Section	03.04.2019	pdf 2027.26 KB	<a href="#">↓</a>

CAD/CAE-Data

CAD data
2D/3D Models 2070-451/998-406
<a href="#">↓</a>

CAE data
ZUKEN Portal 2070-451/998-406
<a href="#">↓</a>

PCB Design
Symbol and Footprint via SamacSys 2070-451/998-406
<a href="#">↓</a>
Symbol and Footprint via Ultra Librarian 2070-451/998-406
<a href="#">↓</a>

1 Compatible Products

1.1 Optional Accessories

1.1.1 Tool

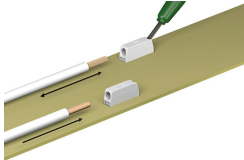
1.1.1.1 Operating tool



Item No.: 2070-400  
Operating tool; made of insulating material; green

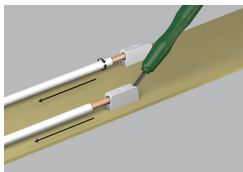
Installation Notes

Conductor termination



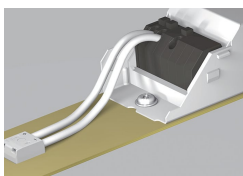
Insert fine-stranded conductors and remove all conductor types via operating tool. Solid conductors can also be terminated by simply pushing them in.

## Conductor removal



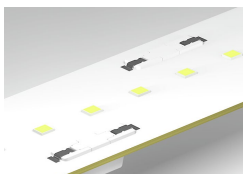
Use an operating tool or simply "twist and pull" to remove solid conductors.

## Installation



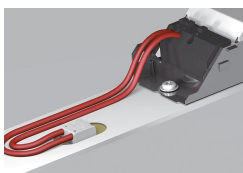
Shift wiring to the back of the LED module via 2070 Series SMD PCB Terminal Blocks.

## Application



The variants with cover feature a center contact surface for easy pick-and-place assembly and minimum shadowing.

## Application



The printed variants offer unique pole marking on the back of the module.