



Color: ■ light gray

Electrical data

Ratings per IEC/EN	
Rated current	57 A

Physical data

Jumper assignment	1-2
-------------------	-----

Material data

Note (material data)	Information on material specifications can be found here
Color	light gray
Material group	I
Insulation material	Polyamide (PA66)
Flammability class per UL94	V0
Fire load	0.016 MJ
Weight	3.3 g

Commercial data

Product Group	22 (TOPJOB S)
eCl@ss 10.0	27-14-11-40
eCl@ss 9.0	27-14-11-40
ETIM 8.0	EC000489
ETIM 7.0	EC000489
PU (SPU)	25 pcs
Packaging type	Bag
Country of origin	DE
GTIN	4055143702461
Customs tariff number	85366990990



Environmental Product Compliance	
RoHS Compliance Status	Compliant,No Exemption

Approvals / Certificates

Declarations of conformity and manufacturer's declarations



Approval	Standard	Certificate Name
Railway WAGO GmbH & Co. KG	-	Railway Ready

Downloads

Environmental Product Compliance

Compliance Search

Environmental Product Compliance 2016-499

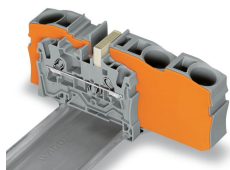
Download icon

Documentation			
Bid Text			
2016-499	19.02.2019	xml 2.55 KB	Download icon
2016-499	28.04.2017	doc 23.50 KB	Download icon

CAD/CAE-Data	
CAD data	CAE data
2D/3D Models 2016-499	EPLAN Data Portal 2016-499
	WSCAD Universe 2016-499
	ZUKEN Portal 2016-499

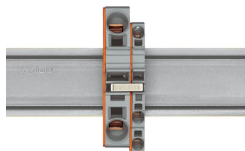
Installation Notes

Commoning



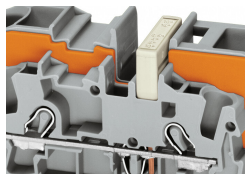
Step-down jumpers common terminal blocks of different sizes, without losing a conductor clamping point. This can be beneficial on long conductor runs where voltage drop can be a problem. A large conductor can be easily connected to smaller conductors at the distribution point. Commoning may be made in either direction using the special thin end plate to cover the open side. Additional through terminal blocks having a smaller cross-section may be commoned using push-in type jumper bars.

Commoning



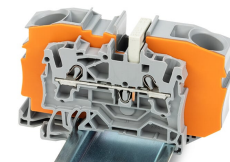
Using step-down jumpers, an end plate must be inserted between the terminal blocks to be commoned.

Commoning



Commoning with step-down jumpers.

Commoning



Step-down jumper (2016-499) commons 16/10 mm² (16/8 AWG) terminal blocks (2016/2010 Series) with 10/6/4/2.5 mm² (8/10/12/14 AWG) terminal blocks (2010/2006/2004/2002 Series).